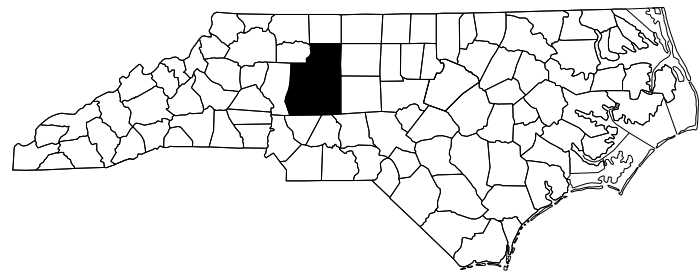


**CONTRACT: TIP PROJECT: R-5789F**



STATE OF NORTH CAROLINA  
DIVISION OF HIGHWAYS

***DIVISIONWIDE***

**LOCATION: DAVIDSON, DAVIE, FORSYTH AND ROWAN COUNTY  
DIVISION 9**

**TYPE OF WORK: CURB RAMP INSTALLATIONS**

STATE	STATE PROJECT REFERENCE NO.	SHEET NO.	TOTAL SHEETS
N.C.	R-5789F	1	
STATE PROJ. NO.	F.A. PROJ. NO.	DESCRIPTION	
44919.3.7		CONSTRUCTION	



**RAMEY KEMP ASSOCIATES**

5808 Farington Place Raleigh, North Carolina 27609  
Phone: 919-872-5115 | www.rameykemp.com | NC License No. C-0910

2018 STANDARD SPECIFICATIONS

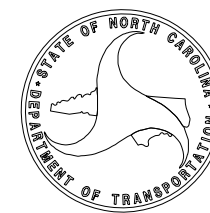
RIGHT OF WAY DATE:

-

LETTING DATE:  
JAN 2021

W. JEFF TURNER  
PROJECT ENGINEER

RAMEY KEMP & ASSOCIATES  
PROJECT DESIGN ENGINEER



SUMMARY OF QUANTITIES - DIVISION 9 UNDER 5000  
 COUNTY: DAVIDSON, DAVIE, FORSYTH, ROWAN

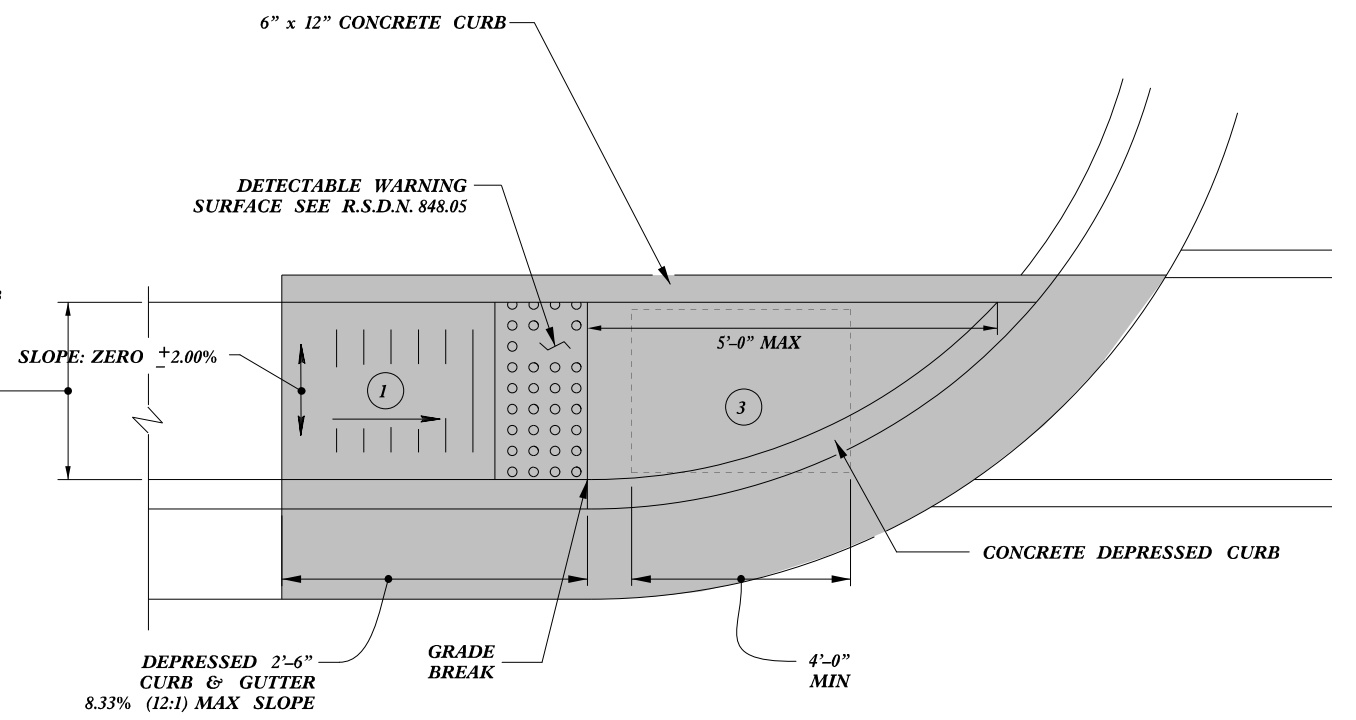
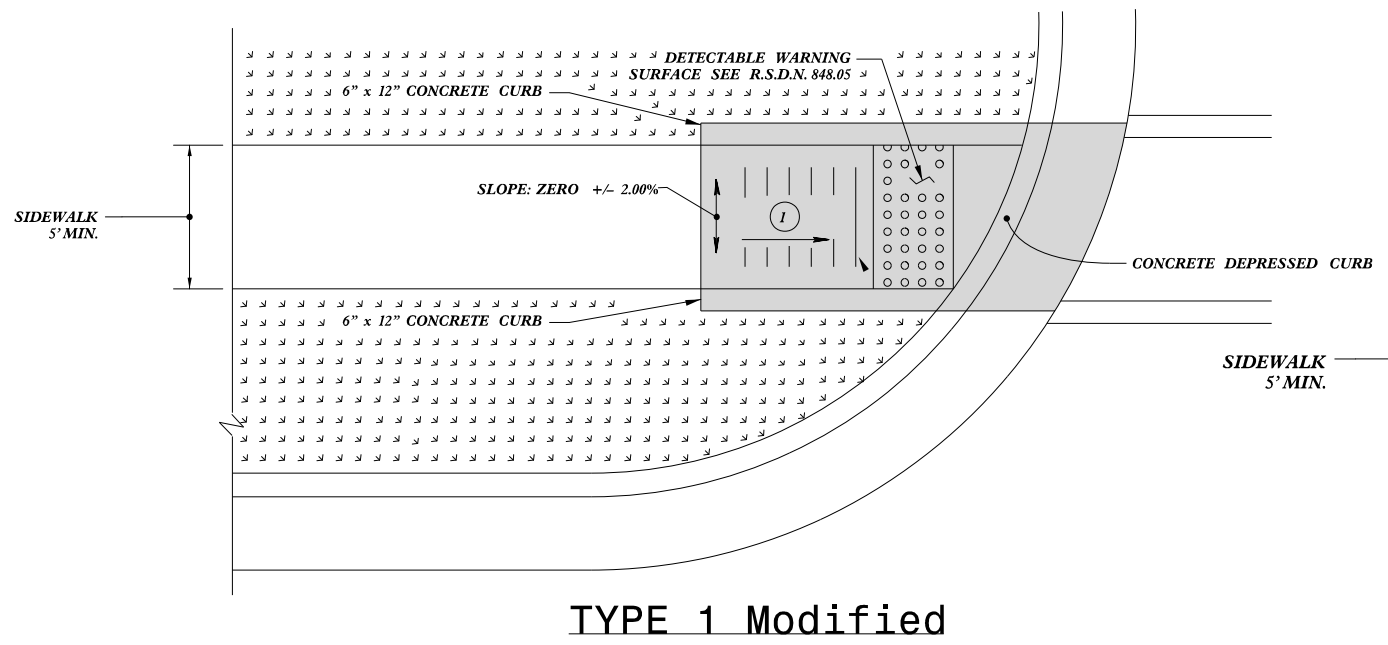
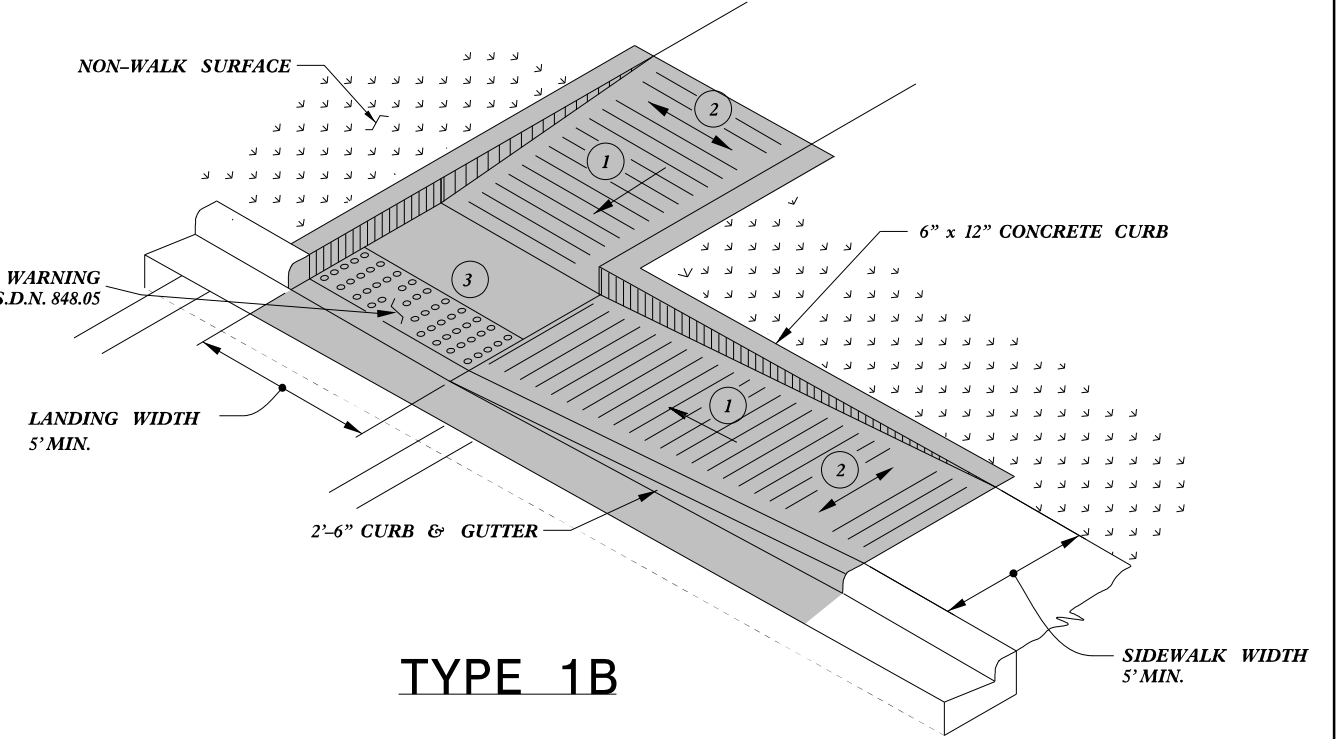
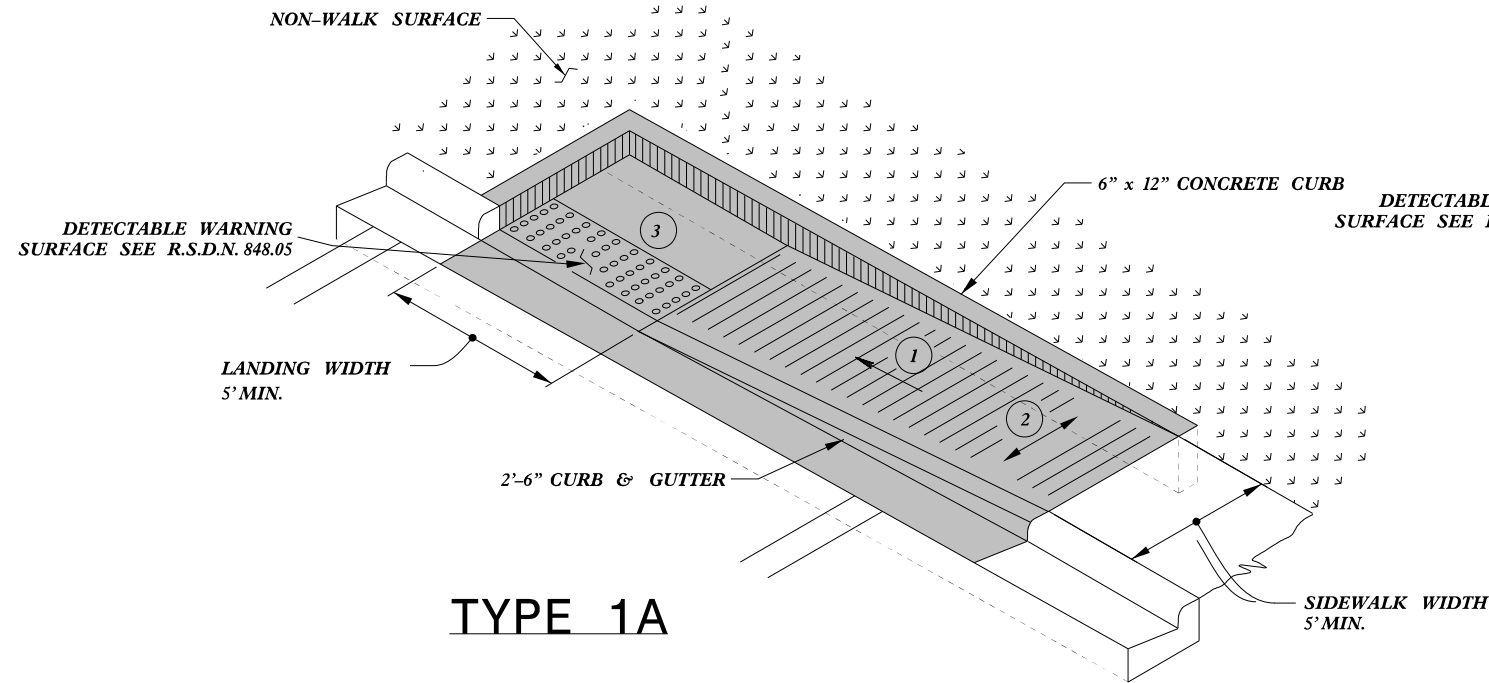
TIP Project: R-5789F  
 WBS: 44919.3.7

Ramp ID	Map Number	Inset Number	Route 1	Route 2	254900000-E	259100000-E	284500000-N	283000000-N	764800000-N	588200000-E	Dome Style/Color	260000000-N	261300000-N	260500000-N	0000915000-N	Ramp Type
					2'-6" Concrete Curb & Gutter LF	4" Concrete Sidewalk SY	Adjust Valve / Meter EA	Adjust Manhole EA	Relocate Sign EA	Adjust Utility Box EA		Retrofit Existing Curb Ramps EA	Remove & Replace Curb EA	Concrete Curb Ramps EA	Remove Curb Ramp - SP EA	
1863	1	1	NC 801	Davie Medical Center Entrance 1							Black		1			Type 3 Modified
1858	1	2	NC 801	Davie Medical Center Entrance 2							Black		1			Type 4B
1814	2	1	Main St	Kirk St			1				Black		1			Type 1 Modified
1190	2	2	Main St	Patterson St							Black		1			Type 2B
1815	2	2	Main St	Patterson St							Black		1			Type 2A
1821	2	3	Main St	Park St			2				Black		1			Type 2A
1203	2	4	Main St	E Ketchie St							Black	1				Retrofit
1209	2	5	Main St	Church St							Red		1			Type 2B
1823	2	5	Main St	Church St			2				Red		1			Type 2B
1824	2	5	Main St	Church St							Red		1			Type 2B
1825	2	5	Main St	Church St							Red		1			Type 2B
1826	2	5	Main St	Church St							Red		1			Type 2B
1827	2	5	Main St	Church St							Red		1			Type 2B
1828	2	5	Main St	Church St											1	Remove
1829	2	5	Main St	Church St	10						Red		1			Type 2B
1835	2	6	Main St	Liberty St							Black		1			Type 1 Modified
1836	2	6	Main St	Liberty St			1				Black		1			Type 2A Modified
1213	2	7	Main St	Washington St							Black		1			Type 1 Modified
1840	2	7	Main St	China Grove MS Driveway							Black	1				Retrofit
1841	2	7	Main St	China Grove MS Driveway							Black		1			Type 1
1842	2	8	Main St	China Grove MS Crosswalk							Black		1			Type 2
1844	2	8	Main St	Old Rockwell Rd							Black		1			Type 1 Modified
1845	2	8	Main St	China Grove MS Crosswalk							Black		1			Type 3
1215	2	9	Main St	Miller St							Black		1			Type 2B
553	2	10	Church Street	Salisbury Street							Red		1			Type 2B
554	2	10	Church Street	Salisbury Street							Red		1			Type 2B
559	2	11	E. Thom Street	Walnut Street							Black		1			Type 1 Modified
560	2	11	E. Thom Street	Walnut Street							Black		1			Type 1 Modified
740	3	1	NC 47	Second Street							Black			1		Type 1
720	3	2	Salisbury Street	Bingham Street							Black		1			Type 1
721	3	2	Salisbury Street	Bingham Street							Black		1			Type 1
722	3	3	Salisbury Street	School Street - Midblock							Black			1		Type 2
723	3	3	Salisbury Street	School Street - Midblock							Black			1		Type 2
724	3	3	Salisbury Street	School Street - Midblock							Black			1		NCDOT Std. 848.06
725	3	3	Salisbury Street	School Street - Midblock							Black			1		NCDOT Std. 848.06
2244	3	4	Salisbury St (NC 47)	Jones St (NC 47)			1				Black		1			Type 1
2245	3	4	Salisbury St (NC 47)	Jones St (NC 47)							Black		1			Type 2A
2247	3	5	Salisbury St (NC 47)	Railroad St							Black		1			Type 1
2248	3	5	Salisbury St (NC 47)	Railroad St							Black		1			Type 1
2250	3	6	Salisbury St (NC 47)	anderson st			1				Black		1			Type 1
2251	3	6	Salisbury St (NC 47)	anderson st							Black		1			Type 1
2253	3	7	Salisbury St (NC 47)	N. main st.							Black		1			NCDOT Std. 848.06
2254	3	7	Salisbury St (NC 47)	N. main st.							Black		1			Type 2A
739	3	8	Salisbury Street	Main Street							Black			1		Type 3
728	3	9	Main Street	Peacock Avenue							Black			1		Type 2A
729	3	9	Main Street	Peacock Avenue							Black			1		Type 1
731	3	9	Main Street	Peacock Avenue							Black			1		Type 2A
727	3	10	Main Street	Finch Avenue							Black		1			Type 1B
2264	3	11	Salisbury St (NC 47)	spring st.							Red		1			Type 1 Modified
2267	3	12	Salisbury St (NC 47)	Varnier St							Red		1			Type 1
2271	3	13	Glenn St (NC 47-NC 109)	O'Reilly entrance							Red		1			Type 1 Modified
2268	3	14	Glenn St (NC 47-NC 109)	Cox Ave							Red		1			Type 1 Modified
2274	3	15	Glenn St (NC 47-NC 109)	First Bank entrance							Red		1			Type 1 Modified
2276	3	16	Glenn St (NC 47-NC 109)	Vernon Ave							Red		1			Type 1 Modified
2069	4	1	Long St	Andrews St/Jefferson St							Black		1			NCDOT Std. 848.06
2070	4	1	Long St	Andrews St/Jefferson St							Black		1			NCDOT Std. 848.06
2071	4	1	Long St	Andrews St/Jefferson St							Black		1			Type 2B
2072	4	1	Long St	Andrews St/Jefferson St							Black		1			Type 2B
2073	4	1	Long St	Andrews St/Jefferson St							Black		1			Type 2B
2074	4	1	Long St	Andrews St/Jefferson St							Black		1			Type 2B
2075	4	1	Long St	Andrews St/Jefferson St							Black		1			Type 1A
2076	4	1	Long St	Andrews St/Jefferson St							Black		1			Type 2B
2064	4	2	Long St	Hall St							Red		1			Type 2B
2065	4	2	Long St	Hall St							Red		1			Type 2B
2062	4	3	Long St	North St							Red		1			Type 1
2063	4	3	Long St	North St							Red		1			Type 1
2059	4	4	Long St	Pinetree Dr							Red		1			Type 1
2056	4	5	Long St	Earnhardt St							Red		1			Type 2A

Ramp ID	Map Number	Inset Number	Route 1	Route 2	2549000000-E	2591000000-E	2845000000-N	2830000000-N	7648000000-N	5882000000-E	Dome Style/Color	2600000000-N	2613000000-N	2605000000-N	0000915000-N	Ramp Type
					2'-6" Concrete Curb & Gutter LF	4" Concrete Sidewalk SY	Adjust Valve / Meter EA	Adjust Manhole EA	Relocate Sign EA	Adjust Utility Box EA		Retrofit Existing Curb Ramps EA	Remove & Replace Curb EA	Concrete Curb Ramps EA	Remove Curb Ramp - SP EA	
2057	4	5	Long St	Earnhardt St							Red		1			Type 2A
2058	4	5	Long St	Earnhardt St							Red		1			Type 1
2054	4	6	Long St	Jackson St			1				Red		1			Type 1
2055	4	6	Long St	Jackson St							Red		1			Type 1
2050	4	7	Long St	Torbush St		5					Red		1			Type 2A
2051	4	7	Long St	Torbush St							Red		1			Type 1
2052	4	7	Long St	Torbush St							Red		1			Type 2A
2046	4	8	Long St	Henderson St			1				Red		1			NCDOT Std. 848.06
2047	4	8	Long St	Henderson St							Red		1			Type 2B
2048	4	8	Long St	Henderson St							Red		1			Type 2B
2049	4	8	Long St	Henderson St							Red		1			Type 2A
2044	4	9	Long St	Weant St							Red		1			Type 2B
2045	4	9	Long St	Weant St							Red		1			Type 2B
2040	4	10	Long St	Spencer St							Red		1			Type 2A
2041	4	10	Long St	Spencer St							Red		1			Type 2A
2042	4	10	Long St	Spencer St							Red		1			Type 2B
2043	4	10	Long St	Spencer St							Red		1			Type 2B
2036	4	11	Long St	Geroid St							Red		1			Type 2A
2037	4	11	Long St	Geroid St			1				Red		1			Type 2B
2038	4	11	Long St	Geroid St							Red		1			Type 1
2039	4	11	Long St	Geroid St							Red		1			Type 1
2032	4	12	Long St	James St							Red		1			Type 1
2033	4	12	Long St	James St							Red		1			Type 1
2034	4	12	Long St	James St							Red		1			Type 2A
2035	4	12	Long St	James St							Red		1			Type 2A
2030	4	13	Long St	Mitchell St							Red		1			Type 1 Modified
2031	4	13	Long St	Mitchell St							Red		1			Type 2B
2028	4	14	Long St	Correll St							Red		1			Type 1 Modified
2029	4	14	Long St	Correll St							Red		1			Type 1
392	4	15	Long St	Isenhour St							Red		1			Type 2A Modified
2024	4	15	Long St	Isenhour St							Red		1			Type 1
2025	4	15	Long St	Isenhour St							Red		1			Type 1
2026	4	15	Long St	Isenhour St							Red		1			Type 1
2078	4	16	Long St	Essie K. Fox Ln.							Red		1			Type 1
2020	4	17	Long St	Moore St							Red		1			Type 1
2021	4	17	Long St	Moore St							Red		1			Type 1
2022	4	17	Long St	Cauble St							Red		1			Type 1
2023	4	17	Long St	Cauble St							Red		1			Type 1
2015	4	18	Long St	Robin Cir							Red		1			Type 1
2016	4	18	Long St	Robin Cir		10					Red		1			Type 1
2018	4	19	Long St	Broad St			2				Red		1			Type 2B
2019	4	19	Long St	Broad St							Red		1			Type 2B
2735	5	1	Main St	Raney St							Red		1			Type 1
2738	5	2	Main St	Brown St							Red		1			Type 1B
2742	5	3	Main St	Lakeview Dr							Red		1			Type 1B
2750	5	4	Main St	End of Sidewalk (303)							Red		1			Type 1
2005	6	1	Salisbury GQ Ave	Dunn's Mountain Church Rd							Black		1			Type 2B
2003	6	2	Dunn's Mountain Church Rd.	Granite Crossing Shopping Center Driveway							Black		1			Type 1
2004	6	2	Dunn's Mountain Church Rd.	Granite Crossing Shopping Center Driveway							Black		1			Type 1
2000	6	3	Dunn's Mountain Church Rd.	Brookwood Dr.							Red		1			Type 2B
2001	6	3	Dunn's Mountain Church Rd.	Brookwood Dr.							Red		1	1		Type 2
769	6	4	North Salisbury Avenue	Kern Street							Black		1			Type 2B
770	6	4	North Salisbury Avenue	Kern Street							Black		1			Type 2B
795	6	5	West Peeler Street	North Oak Street							Black		1			Type 1 Modified
796	6	6	West Peeler Street	North Walnut Street							Black		1			Type 3 Modified
771	6	7	Salisbury Avenue	East Bank Street							Black		1			Type 3 Modified
772	6	7	Salisbury Avenue	East Bank Street							Black		1			Type 3 Modified
774	6	7	Salisbury Avenue	East Bank Street							Black		1			Type 2B
775	6	7	Salisbury Avenue	East Bank Street							Black	1	1			Retrofit
776	6	7	Salisbury Avenue	East Bank Street							Black		1			Type 2B
778	6	8	South Salisbury	East Lyerly Street							Black		1			Type 2B
802	6	9	Main Street	West Bank Street							Black		1			NCDOT Std. 848.06
790	6	10	West Bank Street	N/S Oak Street							Black		1	1		Type 2A Modified
791	6	10	West Bank Street	N/S Oak Street							Black		1			Type 2A
792	6	10	West Bank Street	N/S Oak Street							Black		1			Type 2A
788	6	11	South Main Street	West Lyerly Street							Black		1			NCDOT Std. 848.06
785	6	12	South Salisbury Street	Dunns Mountain Road							Black		1			Type 2B
783	6	13	Dunns Mountain Road	White Rock Avenue							Black	1	1			Retrofit
784	6	13	Dunns Mountain Road	White Rock Avenue							Black		1			Type 2B
749	6	14	South Main Street	Balfour Quarry							Black		1			Type 1A
1186	7	1	Main St	Family Dollar Driveway							Black		1			Type 1
1812	7	1	Main St	Coach Deal Dr							Black		1	1		Type 3 Modified
1185	7	2	Main St	Limits St							Black		1			Type 1

Ramp ID	Map Number	Inset Number	Route 1	Route 2	2549000000-E	2591000000-E	2845000000-N	2830000000-N	7648000000-N	5882000000-E	Dome Style/Color	2600000000-N	2613000000-N	2605000000-N	0000915000-N	Ramp Type
					2'-6" Concrete Curb & Gutter LF	4" Concrete Sidewalk SY	Adjust Valve / Meter EA	Adjust Manhole EA	Relocate Sign EA	Adjust Utility Box EA		Retrofit Existing Curb Ramps EA	Remove & Replace Curb EA	Concrete Curb Ramps EA	Remove Curb Ramp - SP EA	
1797	7	2	Main St	Limits St							Red		1			Type 1
1184	7	3	Main St	Laurel St							Black		1			Type 1
1796	7	3	Main St	Laurel St							Black		1			Type 1
1183	7	4	Main St	Blume St							Black		1			Type 1
1795	7	4	Main St	Blume St							Red		1			Type 2B
1182	7	5	Main St	Garden St			1				Black		1			Type 2B
1179	7	6	Main St	Ryder Ave						1	Yellow		1			Type 2B
1792	7	6	Main St	Ryder Ave							Yellow		1			Type 2B
1175	7	7	Chapel St	Taylor St											1	Remove
1811	7	7	Chapel St	Taylor St							Black		1			Type 1
1174	7	8	Chapel St	Blume St	10	5									1	Remove
1808	7	8	Chapel St	Blume St							Black		1			Type 2B
1809	7	8	Chapel St	Blume St							Black		1			Type 2B
1810	7	8	Chapel St	Blume St	10										1	Remove
1170	7	9	Chapel St	Garden St							Black		1			NCDOT Std. 848.06
1803	7	9	Chapel St	Garden St							Black		1			NCDOT Std. 848.06
1804	7	9	Chapel St	Garden St							Black		1			Type 3 Modified
1805	7	9	Chapel St	Garden St							Black		1			Type 3 Modified
1806	7	9	Chapel St	Garden St			1				Black			1		Type 2A Modified
1807	7	9	Chapel St	Garden St							Black			1		Type 2B
1799	7	10	Chapel St	Ryder Ave							Red		1			Type 2A Modified
1802	7	10	Chapel St	Ryder Ave							Yellow		1			Type 2B
1177	7	11	Main St	Ridge Ave							Black		1			Type 4C
1798	7	11	Main St	Ridge Ave			1				Black		1			Type 3
1162	7	12	Main St	Rice St							Black			1		Type 3
1776	7	12	Main St	Rice St							Red		1			Type 2B
1777	7	12	Main St	Rice St							Red		1			Type 2B
1779	7	12	Main St	Rice St							Red		1			Type 2B
1165	7	13	Hoke St	Zion St							Black		1			Type 1
1782	7	13	Hoke St	Zion St							Black		1			Type 1
1785	7	13	Hoke St	Zion St							Red		1			Type 2A
1786	7	13	Hoke St	Zion St											1	Remove
1787	7	13	Hoke St	Zion St							Red		1			Type 2A
1788	7	13	Hoke St	Zion St											1	Remove
1167	7	14	Hoke St	Valley St							Black		1			Type 2B
1781	7	14	Hoke St	Valley St							Black		1			Type 2B
1159	7	15	Main St	E Round St							Black		1			Type 1 Modified
1774	7	15	Main St	E Round St							Black		1			Type 1 Modified
1158	7	16	Main St	1st St	5						Black		1			Type 2B
1771	7	16	Main St	1st St											1	Remove
1772	7	16	Main St	1st St	5						Black		1			NCDOT Std. 848.06
1773	7	16	Main St	1st St											1	Remove
2546	8	1	Main St (US 52)	Salisbury Street							Black		1			Type 1
2550	8	1	Main St (US 52)	Shinn St							Black		1			Type 1
2532	8	2	Main St (US 52)	Market St (NC 152)							Black		1			Type 2B
2533	8	2	Main St (US 52)	Market St (NC 152)							Black			1		Type 2B
2534	8	2	Main St (US 52)	Market St (NC 152)							Black		1			Type 2B
2535	8	2	Main St (US 52)	Market St (NC 152)							Black		1			Type 2B
2527	8	3	Main St (US 52)	Depot St/Broad St							Black		1			Type 2A
2528	8	3	Main St (US 52)	Depot St/Broad St							Black	1				Retrofit
2530	8	3	Main St (US 52)	Depot St/Broad St							Black		1			Type 2A
2525	8	4	Main St (US 52)	Gold Hill Ave							Black		1			Type 4C
2526	8	4	Main St (US 52)	Gold Hill Ave							Black		1			Type 1 Modified
2522	8	5	Main St (US 52)	Emanuel Church Rd							Black		1			Type 1
2536	8	6	Market St	Poole St							Black		1			Type 1
2537	8	6	Market St	Poole St			1				Black		1			Type 1 Modified
2540	8	7	Palmer Rd	Saint James Lutheran Church Driveway							Black		1			Type 1 Modified
2424	9	1	Broad St (NC 66)	Edwards Rd							Black		1			Type 1 Modified
2426	9	2	Broad St (NC 66)	Bethania St							Black		1			NCDOT Std. 848.06
2427	9	2	Broad St (NC 66)	Bethania St							Black		1			Type 1 Modified
2428	9	3	Broad St (NC 66)	Rural Hall-Germanton Rd							Black		1			NCDOT Std. 848.06
2429	9	3	Broad St (NC 66)	Rural Hall-Germanton Rd							Black		1			NCDOT Std. 848.06
2430	9	3	Broad St (NC 66)	Rural Hall-Germanton Rd							Black		1			NCDOT Std. 848.06
2432	9	4	Broad St (NC 66)	Washington St/Belle Meade Ave							Black		1			Type 2A Modified
2433	9	4	Broad St (NC 66)	Washington St/Belle Meade Ave							Black		1			Type 1 Modified
2434	9	4	Broad St (NC 66)	Washington St/Belle Meade Ave							Black		1			Type 1 Modified
2435	9	4	Broad St (NC 66)	Washington St/Belle Meade Ave							Black		1			Type 2A Modified
2436	9	5	Broad St (NC 66)	Summit St							Black		1			Type 2B
2437	9	5	Broad St (NC 66)	Summit St							Black		1			Type 2B
2438	9	5	Broad St (NC 66)	Summit St							Black		1			Type 2B
2439	9	5	Broad St (NC 66)	Summit St							Black		1			Type 2B
629	10	1	Salisbury Avenue	Jefferson Street							Red		1			Type 1 Modified
630	10	1	Salisbury Avenue	Jefferson Street							Red		1			Type 2A Modified

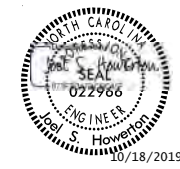
Ramp ID	Map Number	Inset Number	Route 1	Route 2	2549000000-E	2591000000-E	2845000000-N	2830000000-N	7648000000-N	5882000000-E	Dome Style/Color	2600000000-N	2613000000-N	2605000000-N	0000915000-N	Ramp Type
					2'-6" Concrete Curb & Gutter LF	4" Concrete Sidewalk SY	Adjust Valve / Meter EA	Adjust Manhole EA	Relocate Sign EA	Adjust Utility Box EA		Retrofit Existing Curb Ramps EA	Remove & Replace Curb EA	Concrete Curb Ramps EA	Remove Curb Ramp - SP EA	
631	10	1	Salisbury Avenue	Jefferson Street							Red		1			Type 2B
632	10	1	Salisbury Avenue	Jefferson Street							Red		1			Type 2B
633	10	1	Salisbury Avenue	Jefferson Street							Red		1			Type 2B
635	10	1	Salisbury Avenue	Jefferson Street		10					Red			1		Type 1 Modified
627	10	2	Salisbury Avenue	Harrison Street							Red		1			Type 1 Modified
628	10	2	Salisbury Avenue	Harrison Street							Red		1			Type 1 Modified
623	10	3	Salisbury Avenue	First Street							Red		1			Type 1 Modified
624	10	3	Salisbury Avenue	First Street							Red		1			Type 1 Modified
620	10	4	Salisbury Avenue	Second Street							Red	1				Retrofit
621	10	4	Salisbury Avenue	Second Street							Red	1				Retrofit
808	10	4	Salisbury Avenue	Second Street							Red	1				Retrofit
616	10	5	Salisbury Avenue	Third Street							Red			1		Type 4A
617	10	5	Salisbury Avenue	Third Street							Red		1			Type 4A
618	10	5	Salisbury Avenue	Third Street							Red		1			Type 1B
619	10	5	Salisbury Avenue	Third Street							Red		1			Type 3
590	10	6	Third Street	Rowan Avenue							Black	1				Retrofit
591	10	6	Third Street	Rowan Avenue							Black	1				Retrofit
592	10	6	Third Street	Rowan Avenue							Black	1				Retrofit
593	10	6	Third Street	Rowan Avenue							Black	1				Retrofit
594	10	6	Third Street	Rowan Avenue							Black		1			Type 5A
595	10	6	Third Street	Rowan Avenue							Black		1			Type 5A
596	10	6	Third Street	Rowan Avenue							Black		1			Type 4B
597	10	6	Third Street	Rowan Avenue		6					Black			1		Type 4B
610	10	7	Salisbury Avenue	Fourth Street							Red		1			Type 4
611	10	7	Salisbury Avenue	Fourth Street							Red		1			Type 4
612	10	7	Salisbury Avenue	Fourth Street							Red		1			NCDOT Std. 848.06
613	10	7	Salisbury Avenue	Fourth Street							Red		1			Type 1A
615	10	7	Salisbury Avenue	Fourth Street							Red	1				Retrofit
604	10	8	Salisbury Avenue	Fifth Street							Red		1			NCDOT Std. 848.06
605	10	8	Salisbury Avenue	Fifth Street				1			Red		1			NCDOT Std. 848.06
606	10	8	Salisbury Avenue	Fifth Street							Red		1			Type 4
607	10	8	Salisbury Avenue	Fifth Street							Red		1			Type 4
608	10	8	Salisbury Avenue	Fifth Street							Red		1			Type 4B
609	10	8	Salisbury Avenue	Fifth Street							Red		1			Type 4B
598	10	9	Salisbury Avenue	Sixth Street			1				Red			1		Type 2
599	10	9	Salisbury Avenue	Sixth Street							Red		1			Type 4B
600	10	9	Salisbury Avenue	Sixth Street							Red	1				Retrofit
601	10	9	Salisbury Avenue	Sixth Street					1		Red			1		Type 1 Modified
602	10	9	Salisbury Avenue	Sixth Street							Red		1			Type 1A
603	10	9	Salisbury Avenue	Sixth Street							Red		1			Type 4B
578	10	10	Salisbury Avenue	Seventh Street							Red			1		Type 1 Modified
579	10	10	Salisbury Avenue	Seventh Street				1			Red		1			Type 1 Modified
576	10	11	Salisbury Avenue	Eighth Street							Red		1			Type 1 Modified
577	10	11	Salisbury Avenue	Eighth Street							Red		1			Type 1 Modified
583	10	12	Seventh Street	Rowan Avenue		5					Black			1		Type 1 Modified
584	10	12	Seventh Street	Rowan Avenue		5					Black			1		Type 1 Modified
589	10	13	Fourth Street	Whitehead Avenue							Black		1			Type 1 Modified
2558	10	14	Main St (US 29/US 70/NC 150)	17th St		5					Red		1			Type 1 Modified
2559	10	14	Main St (US 29/US 70/NC 150)	17th St							Red		1			Type 1 Modified
636	10	15	Salisbury Avenue	Herman Street							Red		1			Type 1 Modified
637	10	15	Salisbury Avenue	Herman Street							Red			1		Type 1 Modified
<b>TOTALS:</b>					<b>40</b>	<b>56</b>	<b>18</b>	<b>2</b>	<b>1</b>	<b>1</b>	<b>-</b>	<b>14</b>	<b>216</b>	<b>27</b>	<b>8</b>	
					2549000000-E	2591000000-E	2845000000-N	2830000000-N	7648000000-N	5882000000-E		2600000000-N	2613000000-N	2605000000-N	0000915000-N	
					2'-6" Concrete Curb & Gutter LF	4" Concrete Sidewalk SY	Adjust Valve / Meter EA	Adjust Manhole EA	Relocate Sign EA	Adjust Utility Box EA		Retrofit Existing Curb Ramps EA	Remove & Replace Curb Ramps EA	Concrete Curb Ramps EA	Remove Curb Ramp - SP EA	



- 1 8.33% (12:1) MAX RAMP SLOPE
- 2 CROSS SLOPE: 2.00%
- 3 CURB RAMPS REQUIRE A (4'-0") MINIMUM LANDING WITH A MAXIMUM CROSS SLOPE AND LONGITUDINAL SLOPE OF 2.00% WHERE PEDESTRIANS PERFORM TURNING MANEUVERS. SLOPE TO DRAIN TO CURB.

PAY LIMITS FOR 1 CURB RAMP

REFER TO ROADWAY STANDARD DRAWING NUMBER 848.05 SHEET 3 OF 3 FOR ALL RAMP NOTES

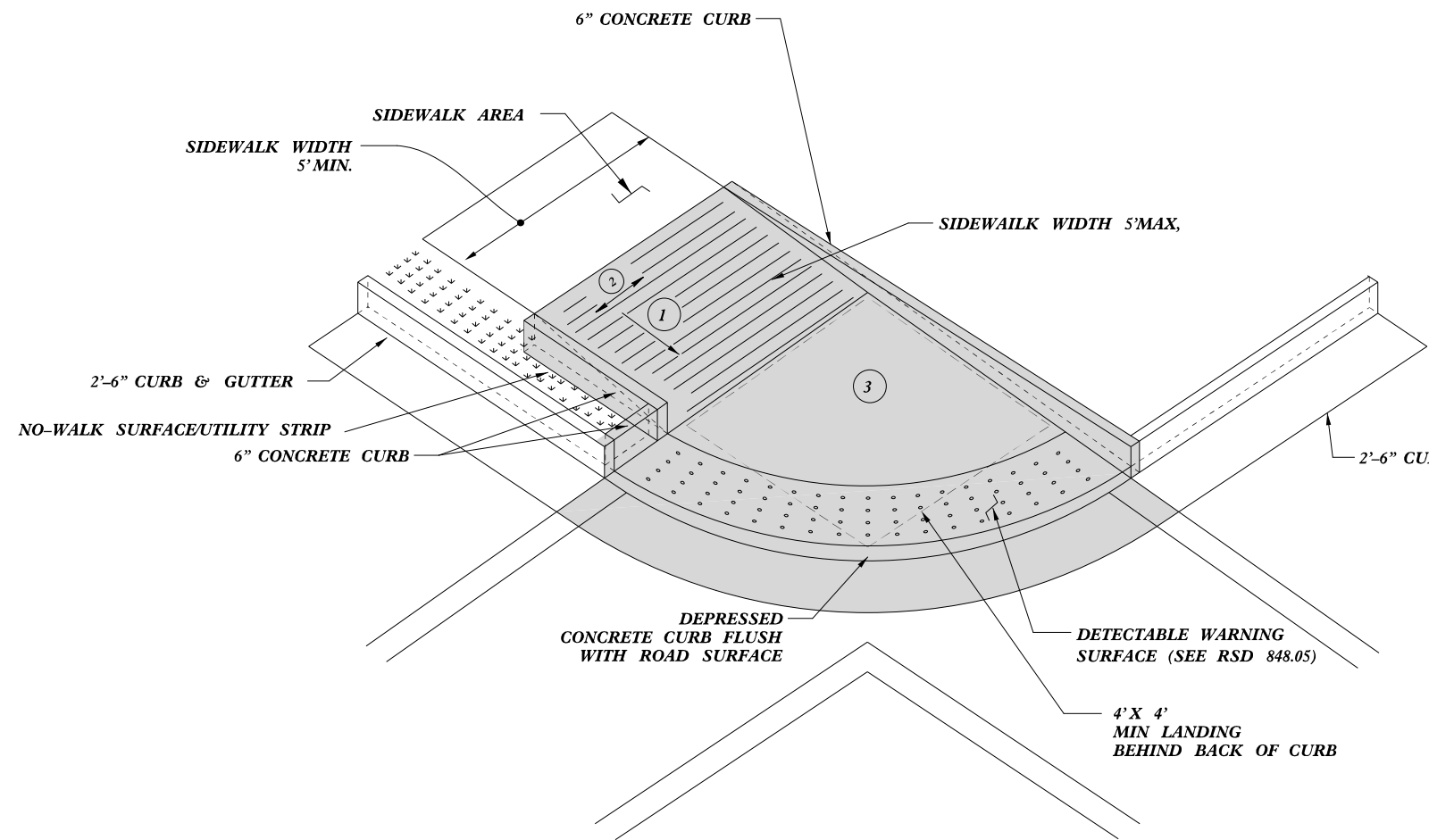


DOCUMENT NOT CONSIDERED FINAL UNLESS ALL SIGNATURES COMPLETED

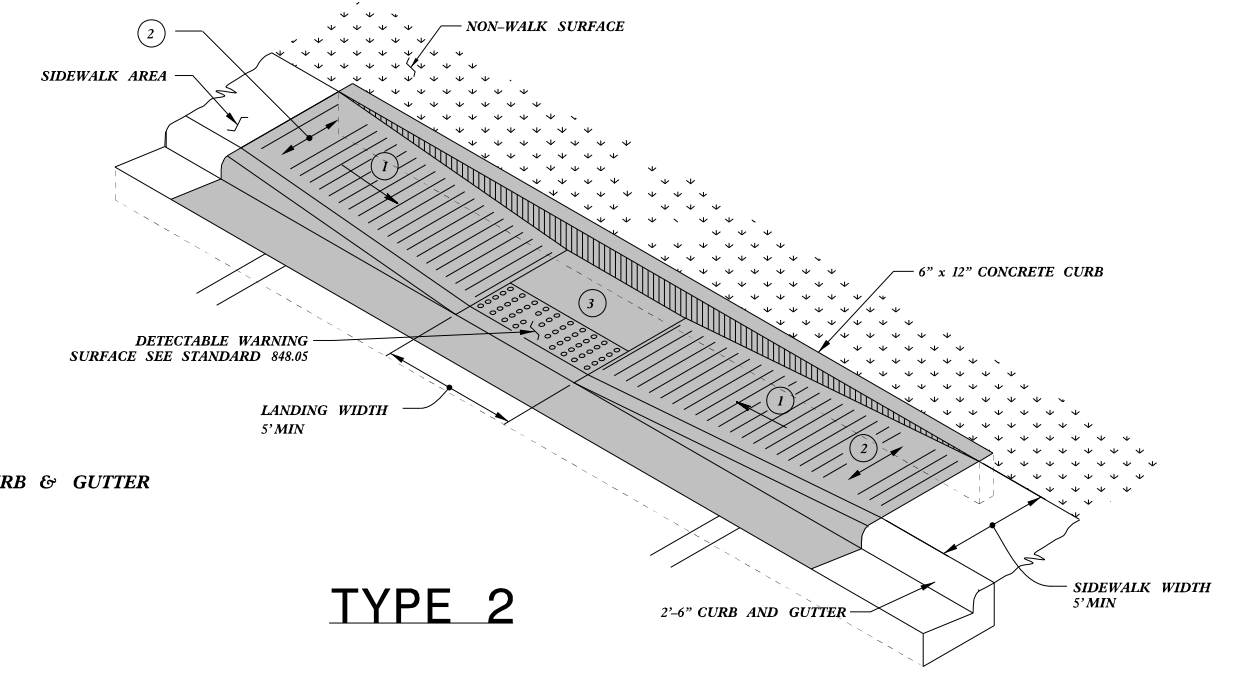
<b>CONTRACT STANDARDS AND DEVELOPMENT UNIT</b>	
Office 919-707-6950	FAX 919-250-4119
<b>CURB RAMPS</b>	
Directional Ramps	
ORIGINAL BY: J.S. HOWERTON	DATE: 7/7/11
MODIFIED BY:	DATE:
CHECKED BY:	DATE:
FILE SPEC: stds/2012CurbRamp/CurbRampDetails.dgn	

5/14/99  
C:\Users\jsho\OneDrive\Documents\2012CurbRamp\CurbRampDetails.dgn

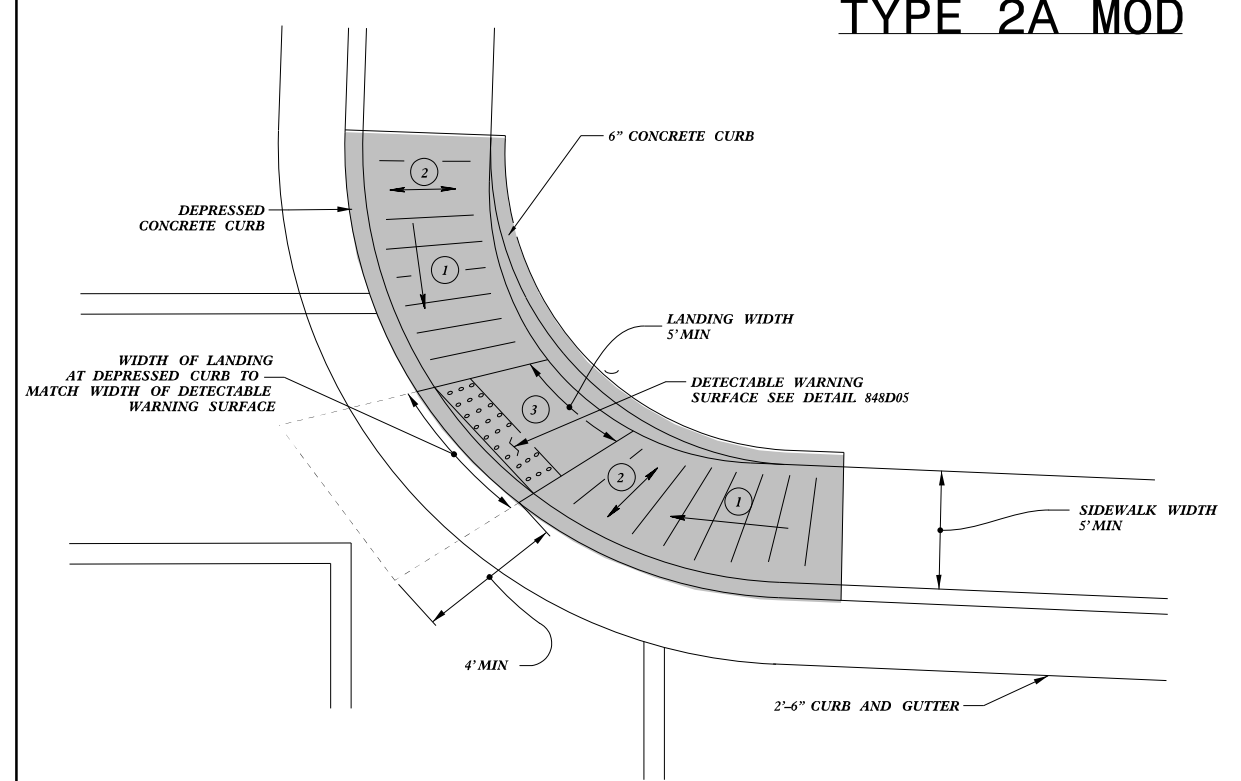
5/14/99



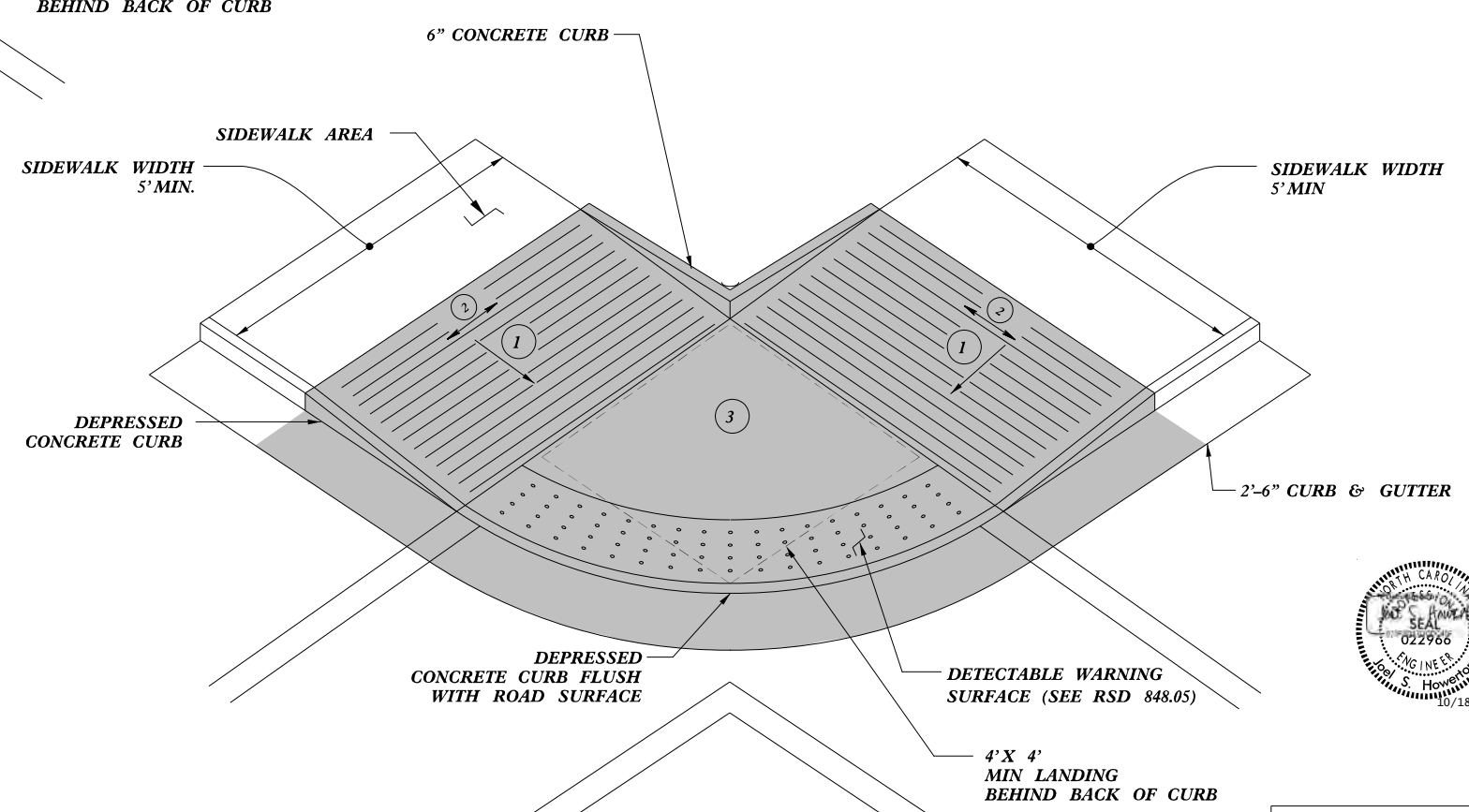
TYPE 2A MOD



TYPE 2



TYPE 2B



TYPE 2A

- 1 8.33% (12:1) MAX RAMP SLOPE
- 2 CROSS SLOPE: 2.00%
- 3 CURB RAMPS REQUIRE A (4'-0") MINIMUM LANDING WITH A MAXIMUM CROSS SLOPE AND LONGITUDINAL SLOPE OF 2.00% WHERE PEDESTRIANS PERFORM TURNING MANEUVERS. SLOPE TO DRAIN TO CURB.

PAY LIMITS FOR 1 CURB RAMP



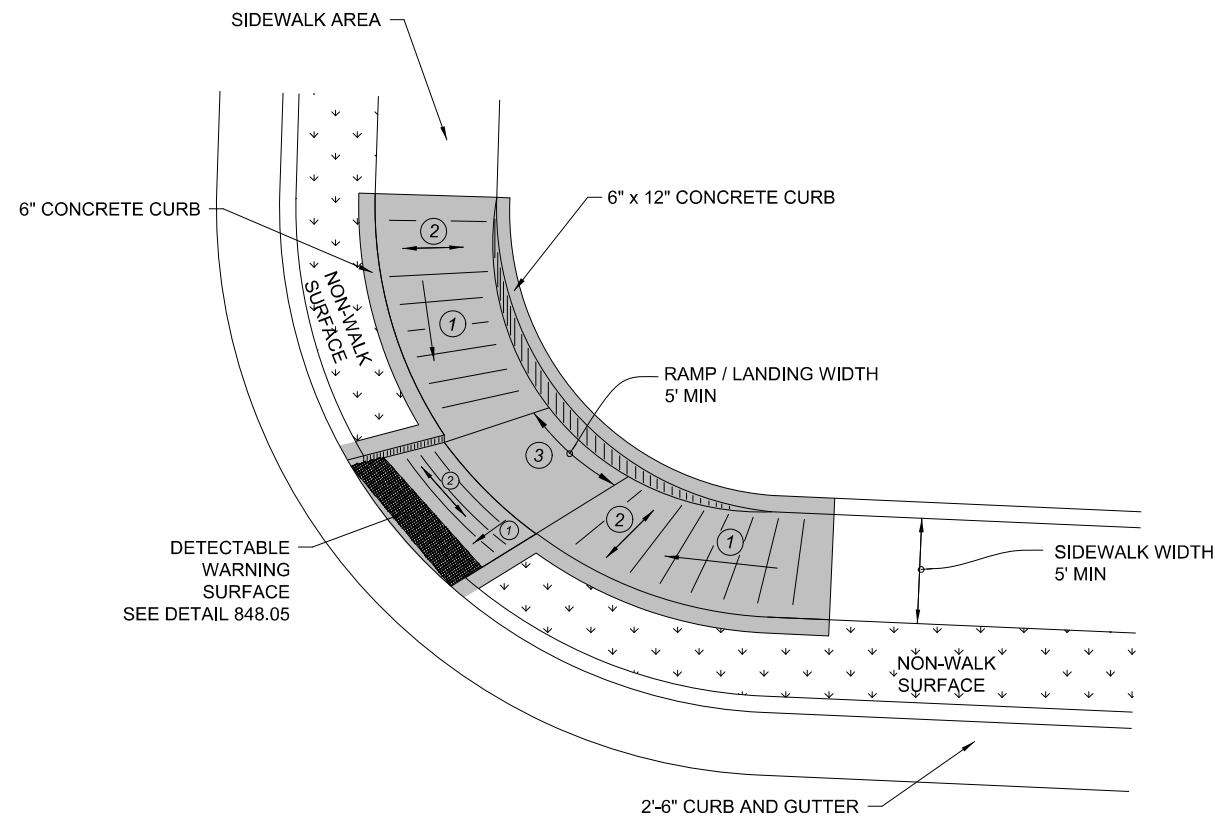
DOCUMENT NOT CONSIDERED FINAL UNLESS ALL SIGNATURES COMPLETED

**CONTRACT STANDARDS AND DEVELOPMENT UNIT**  
Office 919-707-6950 FAX 919-250-4119

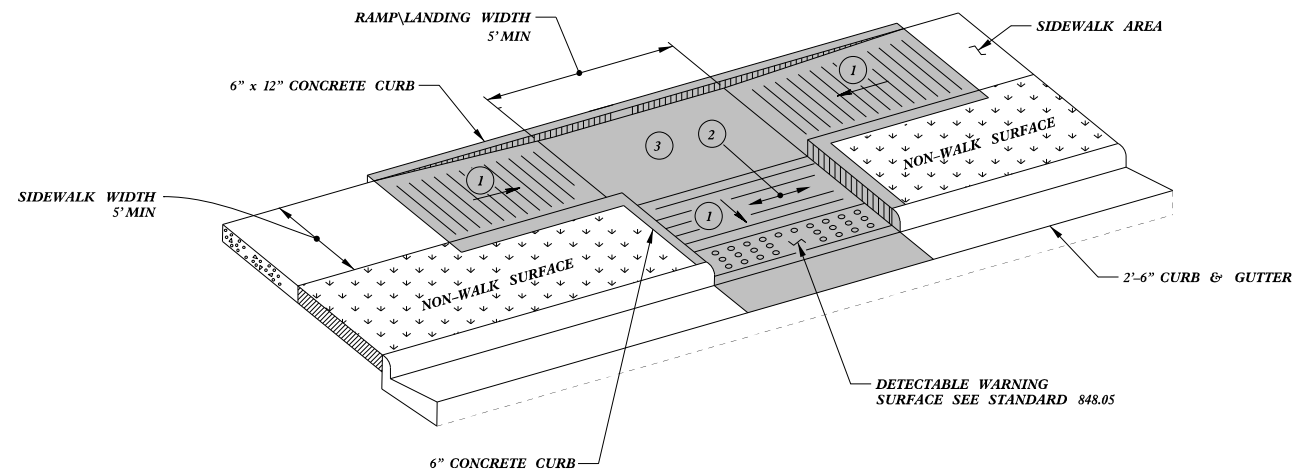
**CURB RAMPS**

ORIGINAL BY: J.S. HOWERTON DATE: 7/7/11  
 MODIFIED BY: \_\_\_\_\_ DATE: \_\_\_\_\_  
 CHECKED BY: \_\_\_\_\_ DATE: \_\_\_\_\_  
 FILE SPEC: stds/2012CurbRamp/CurbRampDetails.dgn

PAY LIMITS FOR 1 CURB RAMP



TYPE 3 MODIFIED  
INSTALLATION IN A RADIUS



TYPE 3

- 1 8.33% (12:1) MAX RAMP SLOPE
- 2 CROSS SLOPE: 2.00%
- 3 CURB RAMPS REQUIRE A (4'-0") MINIMUM LANDING WITH A MAXIMUM CROSS SLOPE AND LONGITUDINAL SLOPE OF 2.00% WHERE PEDESTRIANS PERFORM TURNING MANEUVERS. SLOPE TO DRAIN TO CURB.



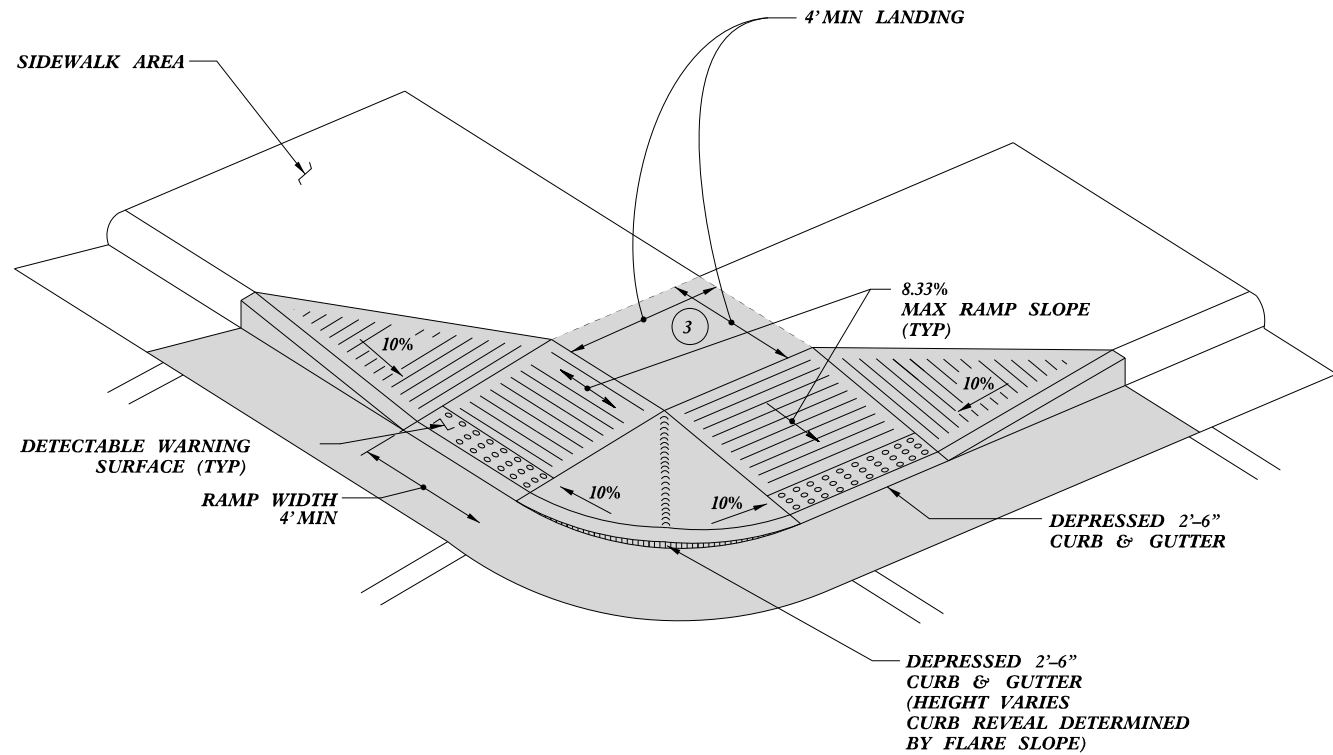
DOCUMENT NOT CONSIDERED FINAL UNLESS ALL SIGNATURES COMPLETED

CONTRACT STANDARD AND DEVELOPMENT UNIT  
 Office 919-707-6950 FAX 919-250-4119

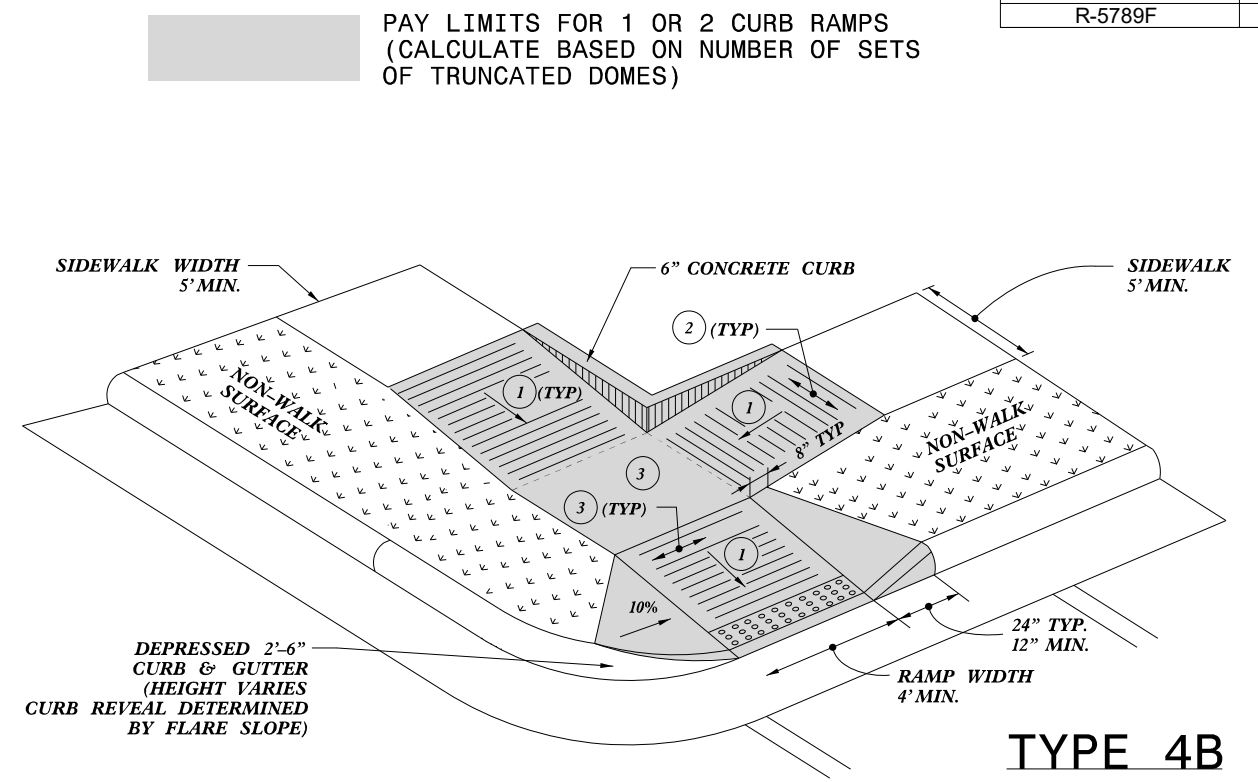
CURB RAMPS

ORIGINAL BY: J.S. HOWERTON DATE: 7/7/11  
 MODIFIED BY: \_\_\_\_\_ DATE: \_\_\_\_\_  
 CHECKED BY: \_\_\_\_\_ DATE: \_\_\_\_\_  
 FILE SPEC: stds/2012CurbRamp/CurbRampDetails.dgn

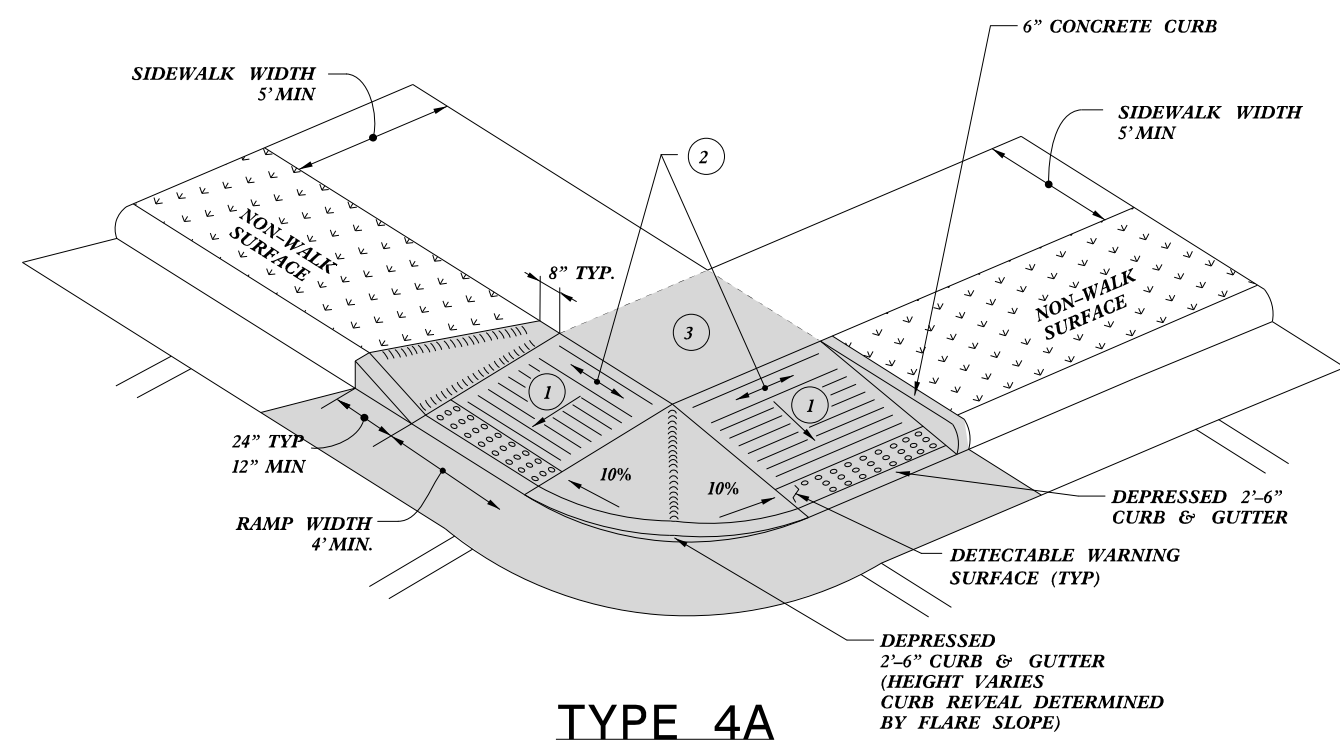




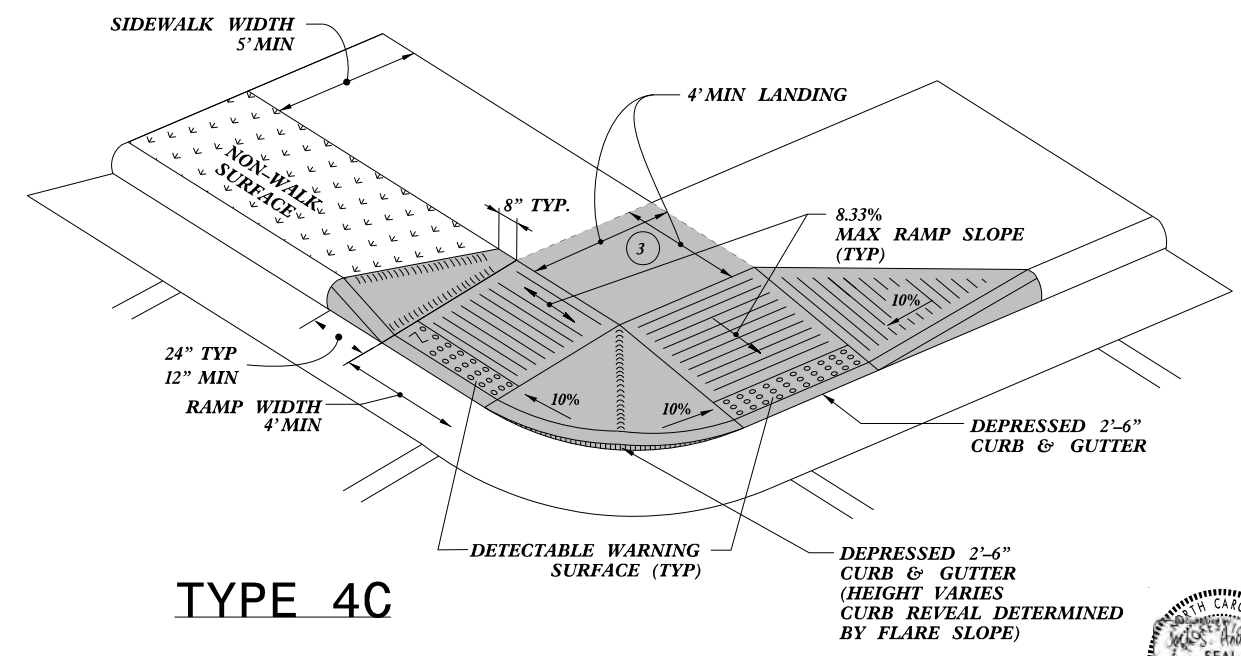
**TYPE 4**



**TYPE 4B**



**TYPE 4A**



**TYPE 4C**

- 1 8.33% (12:1) MAX RAMP SLOPE
- 2 CROSS SLOPE: 2.00%
- 3 CURB RAMPS REQUIRE A (4'-0") MINIMUM LANDING WITH A MAXIMUM CROSS SLOPE AND LONGITUDINAL SLOPE OF 2.00% WHERE PEDESTRIANS PERFORM TURNING MANEUVERS. SLOPE TO DRAIN TO CURB.

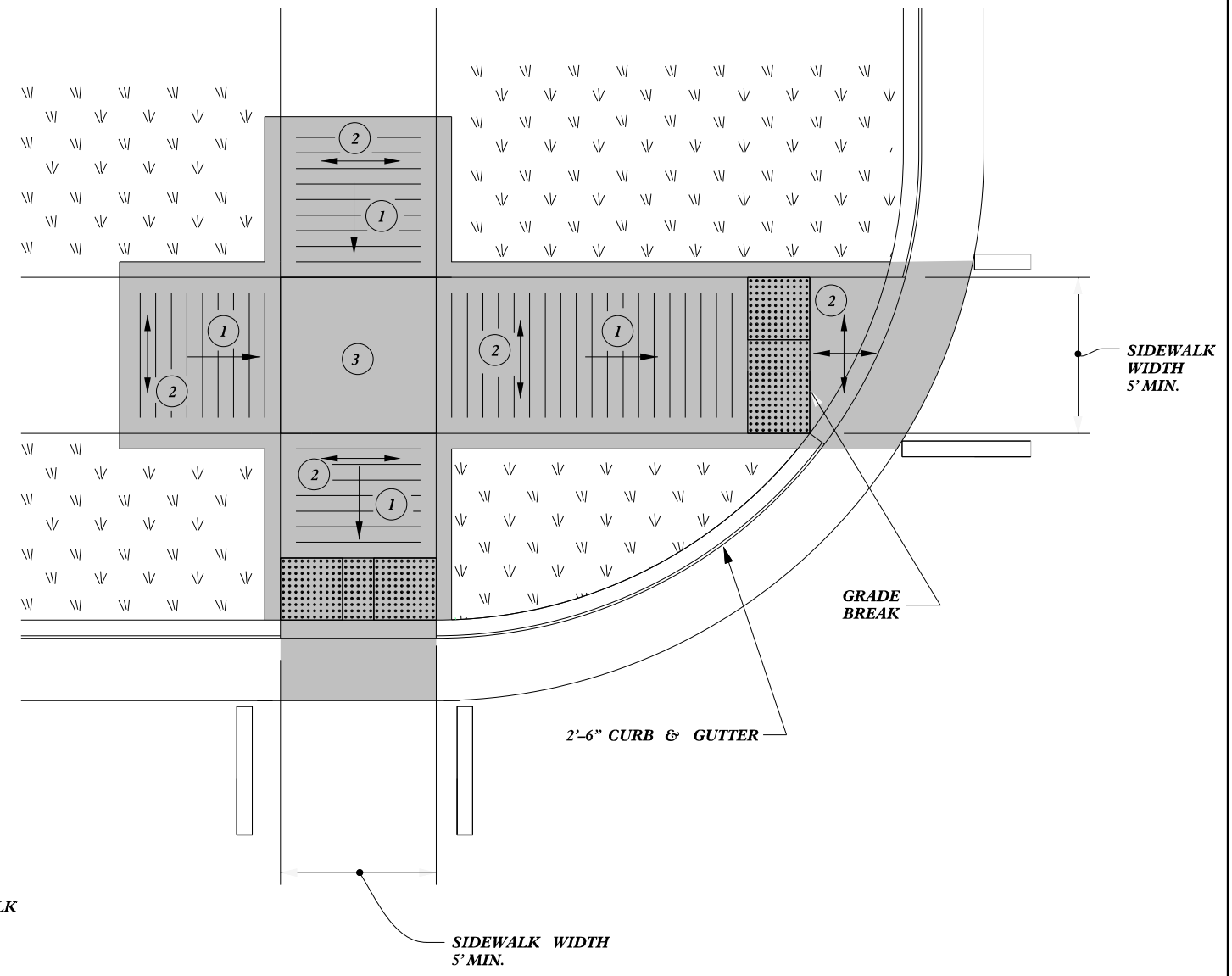


<b>CONTRACT STANDARDS AND DEVELOPMENT UNIT</b>	
Office 919-707-6950	FAX 919-250-4119
<b>CURB RAMPS</b>	
ORIGINAL BY: J.S. HOWERTON	DATE: 7/7/11
MODIFIED BY:	DATE:
CHECKED BY:	DATE:
FILE SPEC: stds/2012CurbRamp/CurbRampDetails.dgn	

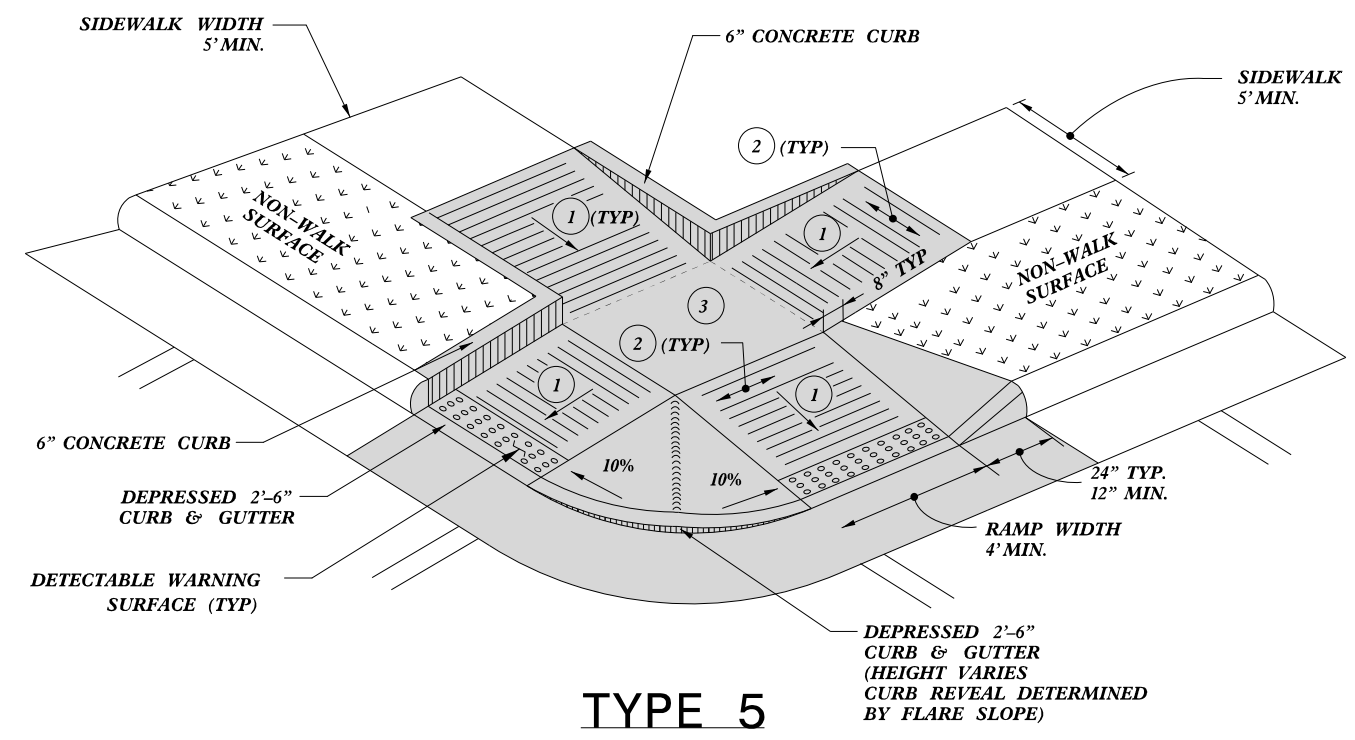
REFER TO ROADWAY STANDARD DRAWING NUMBER 848.05 SHEET 3 OF 3 FOR ALL RAMP NOTES

5/14/99  
C:\Users\jsho\OneDrive\Documents\2012CurbRamp\CurbRampDetails.dgn

**PAY LIMITS FOR 1 OR 2 CURB RAMPS**  
(CALCULATE BASED ON NUMBER OF SETS OF TRUNCATED DOMES)



**TYPE 5A**



**TYPE 5**

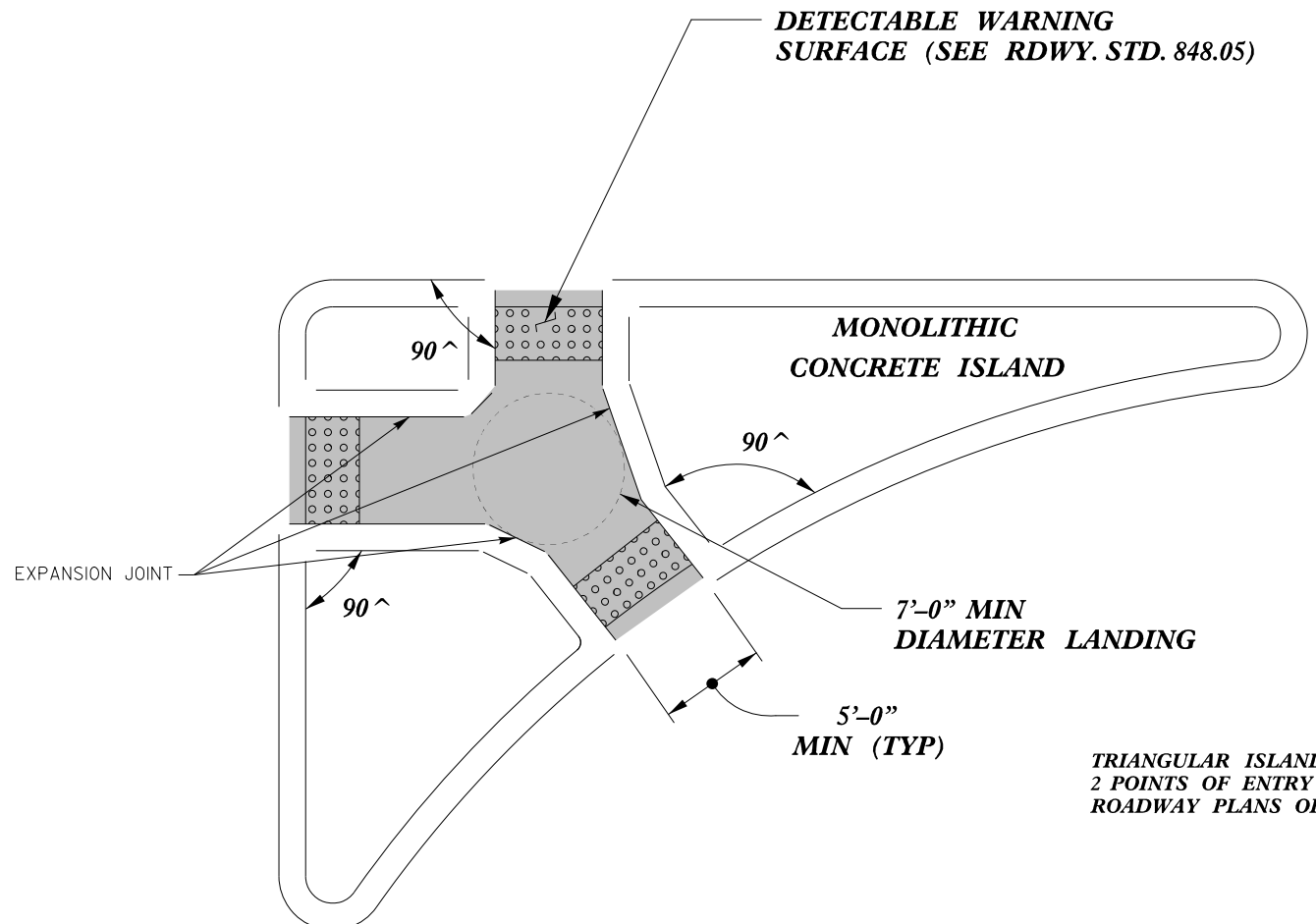
- 1 8.33% (12:1) MAX RAMP SLOPE
- 2 CROSS SLOPE: 2.00%
- 3 CURB RAMPS REQUIRE A (4'-0") MINIMUM LANDING WITH A MAXIMUM CROSS SLOPE AND LONGITUDINAL SLOPE OF 2.00% WHERE PEDESTRIANS PERFORM TURNING MANEUVERS. SLOPE TO DRAIN TO CURB.



<b>CONTRACT STANDARDS AND DEVELOPMENT UNIT</b>	
Office 919-707-6950 FAX 919-250-4119	
<b>CURB RAMPS</b>	
ORIGINAL BY: J.S. HOWERTON	DATE: 7/7/11
MODIFIED BY:	DATE:
CHECKED BY:	DATE:
FILE SPEC: stds/2012CurbRamp/CurbRampDetails.dgn	

REFER TO ROADWAY STANDARD DRAWING NUMBER 848.05 SHEET 3 OF 3 FOR ALL RAMP NOTES

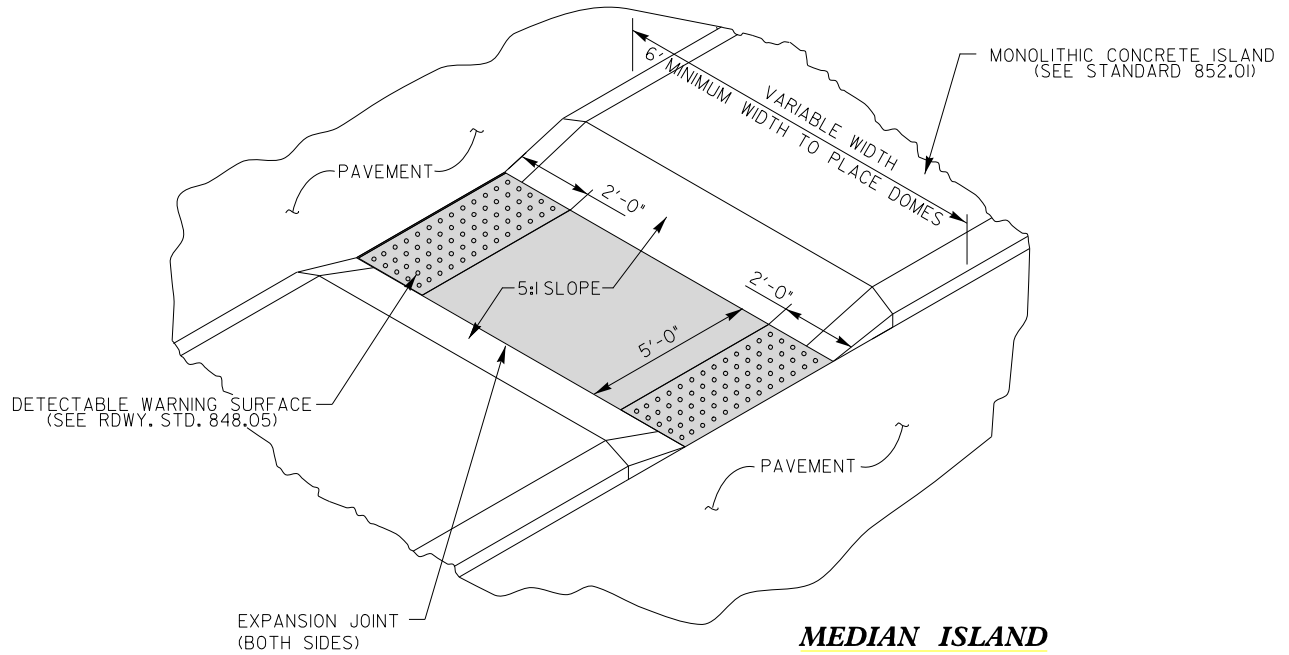
DATE PLOTTED: 10/18/2019 10:18:20 AM



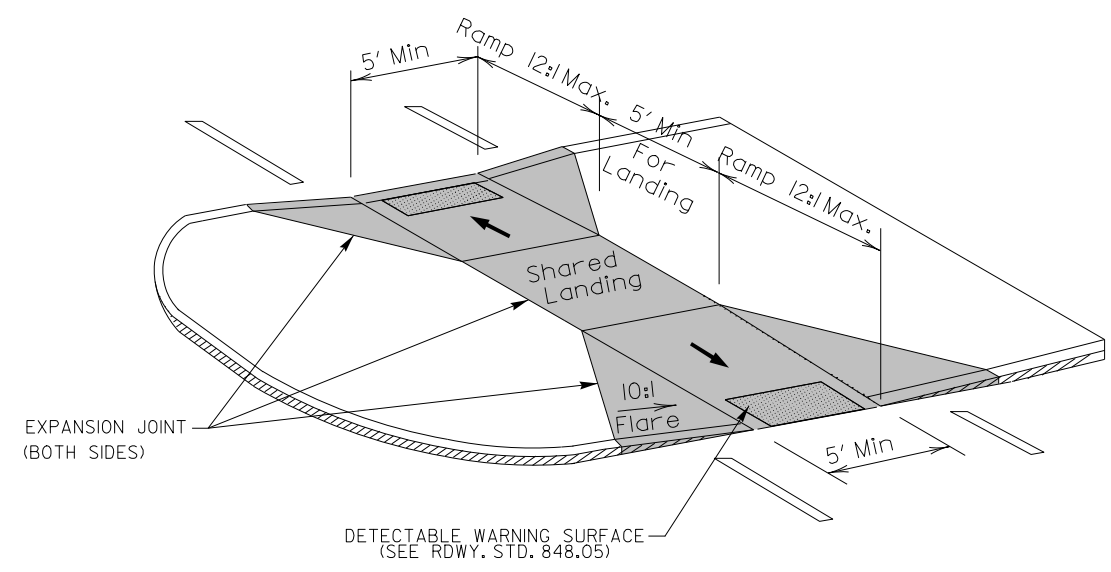
**PAY LIMITS FOR 2 OR 3 CURB RAMPS**  
(CALCULATE BASED ON NUMBER OF SETS OF TRUNCATED DOMES)

TRIANGULAR ISLANDS MAY BE CONSTRUCTED WITH ONLY 2 POINTS OF ENTRY AND EXIT AS SHOWN IN THE ROADWAY PLANS OR AS DIRECTED BY THE ENGINEER.

**TRIANGULAR ISLAND WITH CUT THROUGH**  
**TYPE 6**



**MEDIAN ISLAND WITH CUT THROUGH**  
**TYPE 7**



**MEDIAN ISLAND CURB RAMPS**  
**TYPE 8**

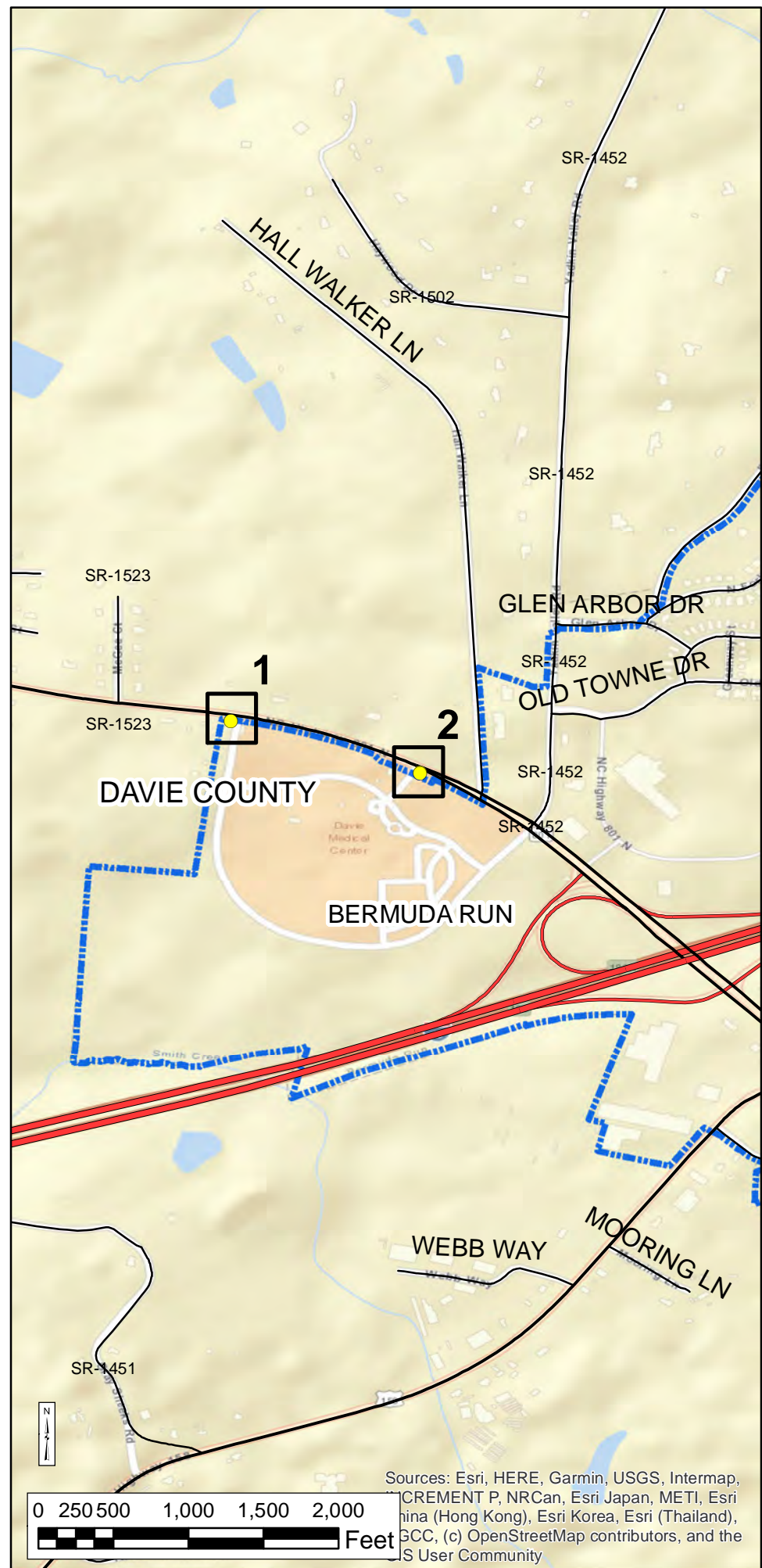
DOCUMENT NOT CONSIDERED FINAL UNLESS ALL SIGNATURES COMPLETED

<b>CONTRACT STANDARDS AND DEVELOPMENT UNIT</b>	
Office 919-707-6950 FAX 919-250-4119	
<b>CURB RAMPS</b>	
Median or Turn Lane Islands	
ORIGINAL BY: J.S. HOWERTON	DATE: 7/7/11
MODIFIED BY:	DATE:
CHECKED BY:	DATE:
FILE SPEC: stds/2012CurbRamp/CurbRampDetails.dgn	



10/18/2019

5/14/99  
C:\Users\jsho\OneDrive\Documents\2012CurbRamp\CurbRampDetails.dgn



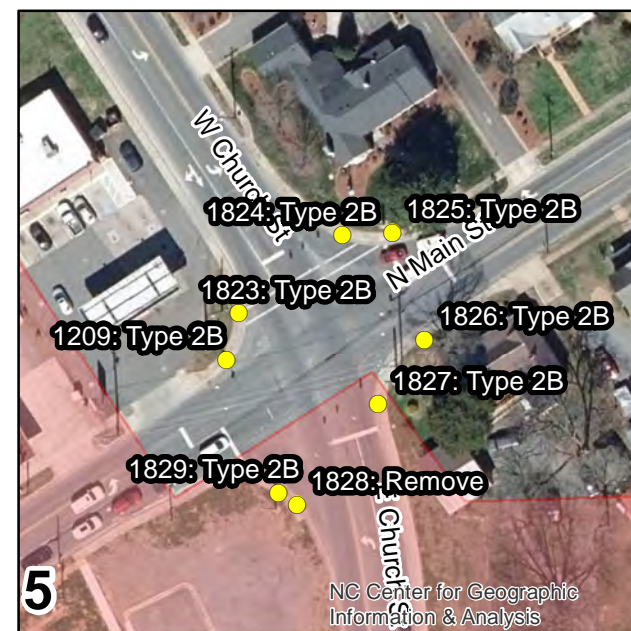
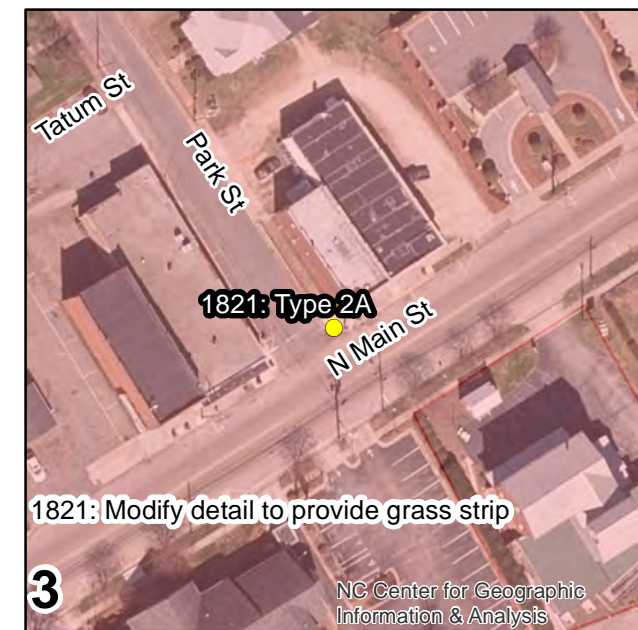
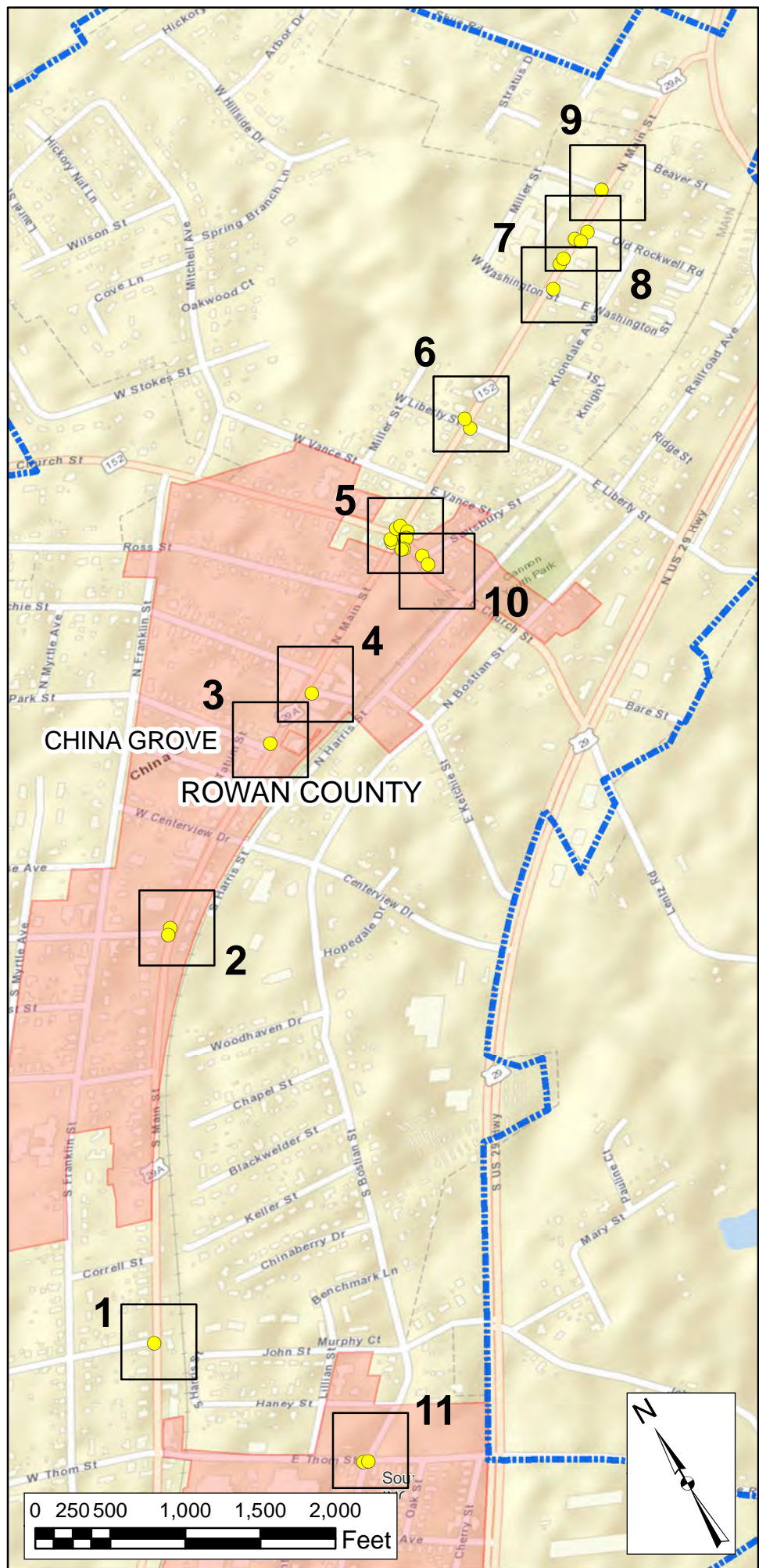
**LEGEND**

**ADA RAMP IMPROVEMENT LOCATION**

- MISSING
- NOT COMPLIANT
- MUNICIPAL BOUNDARY
- NCHPO HISTORIC PROPERTY OR DISTRICT

0 50 100 150  
Ft

	<b>NORTH CAROLINA DEPARTMENT OF TRANSPORTATION DIVISION OF HIGHWAYS</b>
	RAMEY KEMP & ASSOCIATES, INC
<b>DIVISION 9 INTERSECTION ADA IMPROVEMENTS DAVIDSON, DAVIE, FORSYTH, AND ROWAN COUNTIES STIP PROJECT R-5789F</b>	
MAP 1	



**LEGEND**

**ADA RAMP IMPROVEMENT LOCATION**

- MISSING
- NOT COMPLIANT
- MUNICIPAL BOUNDARY
- NCHPO HISTORIC PROPERTY OR DISTRICT

0 50 100 150 Ft

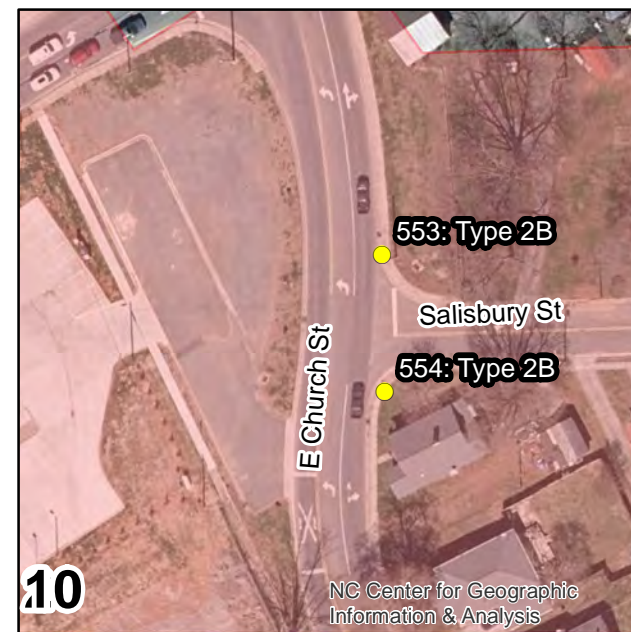
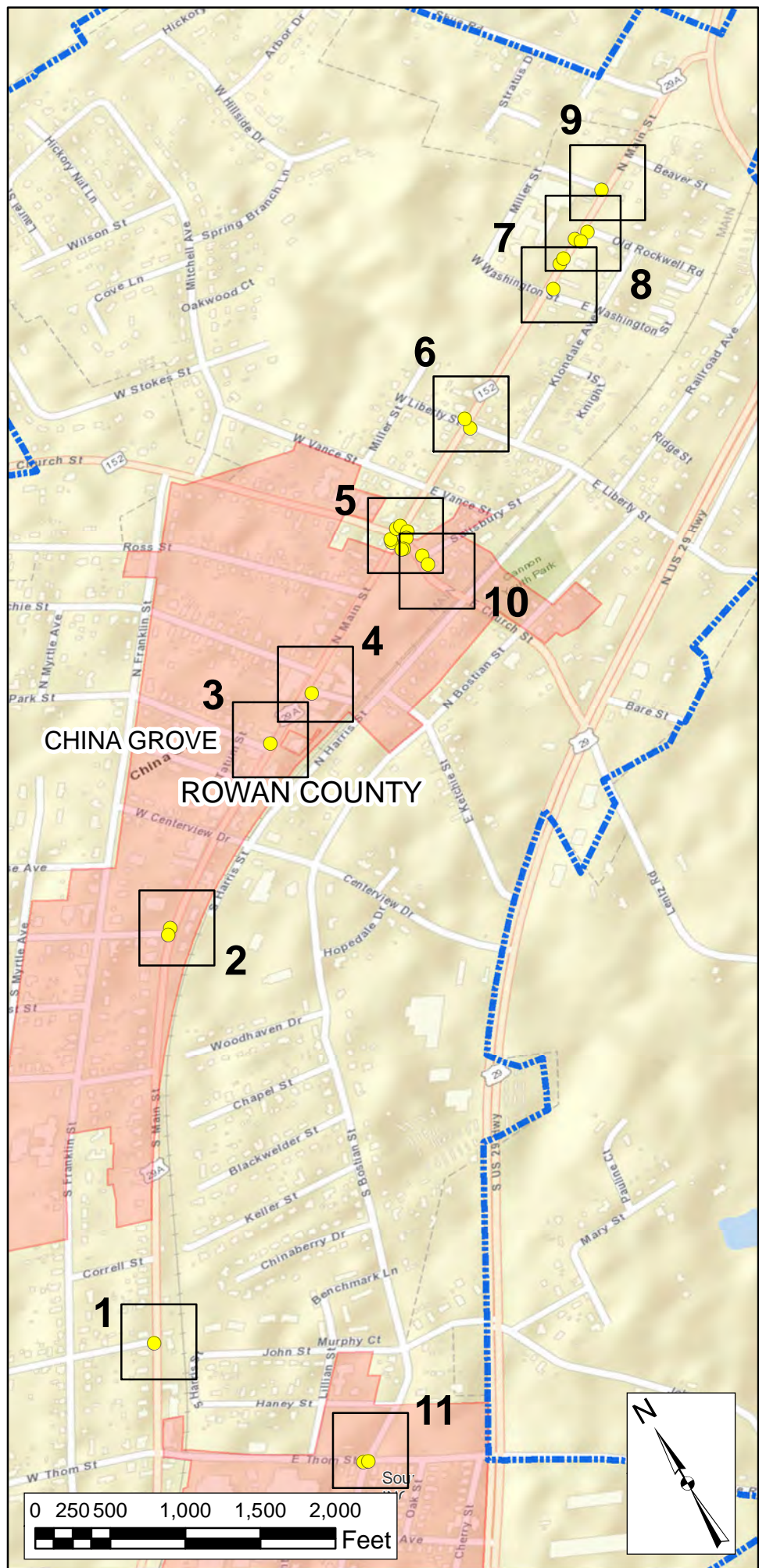
N

NORTH CAROLINA DEPARTMENT OF TRANSPORTATION  
DIVISION OF HIGHWAYS

RAMEY KEMP & ASSOCIATES, INC

DIVISION 9 INTERSECTION ADA IMPROVEMENTS  
DAVIDSON, DAVIE, FORSYTH, ROWAN, AND STOKES COUNTIES  
STIP PROJECT R-5789F

MAP 2




**LEGEND**

**ADA RAMP IMPROVEMENT LOCATION**

- MISSING
- NOT COMPLIANT
- ▬ MUNICIPAL BOUNDARY
- ▭ NCHPO HISTORIC PROPERTY OR DISTRICT

0 50 100 150 Ft

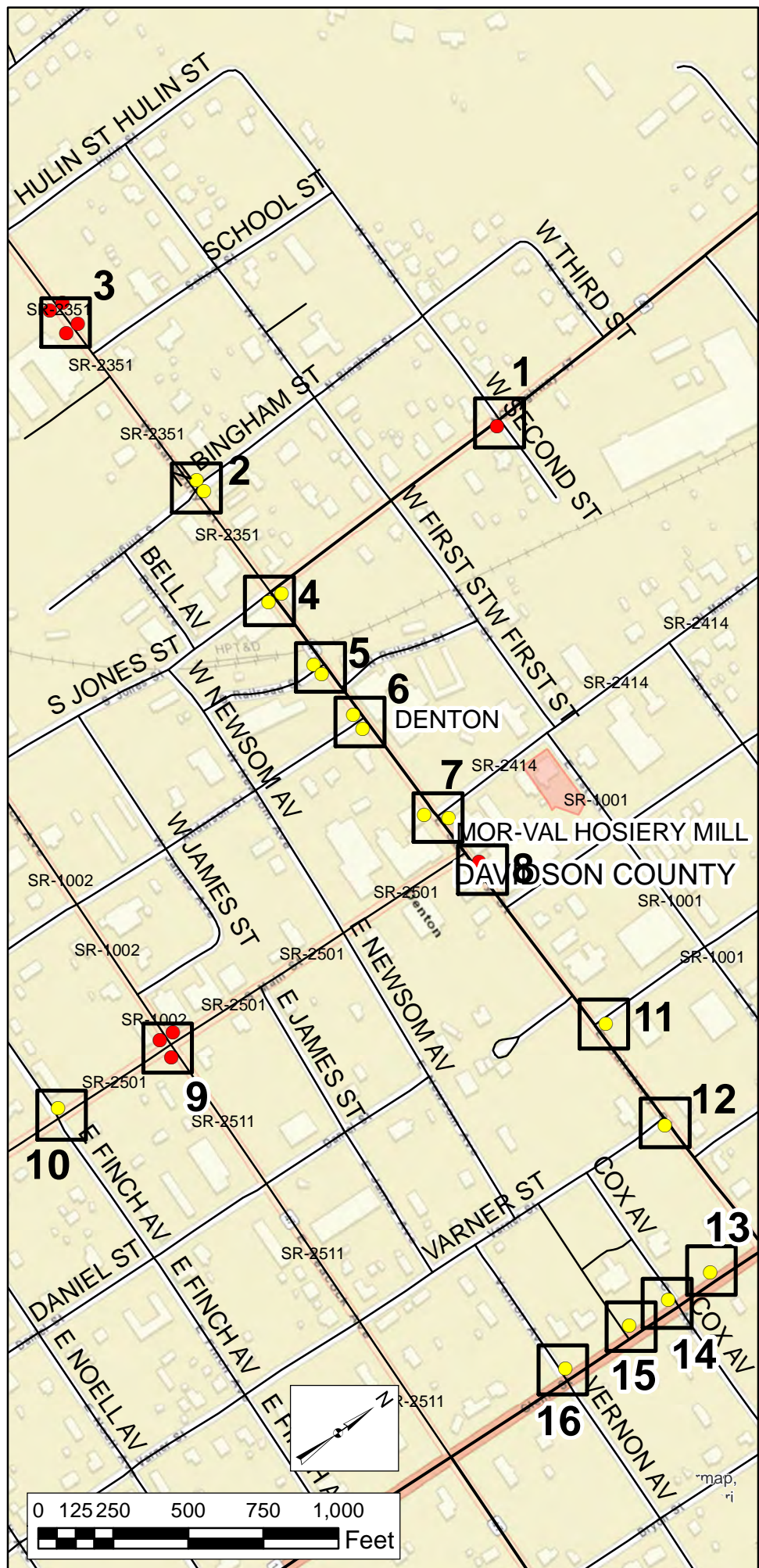
 NORTH CAROLINA DEPARTMENT OF TRANSPORTATION

NORTH CAROLINA DEPARTMENT OF TRANSPORTATION  
DIVISION OF HIGHWAYS

RAMEY KEMP & ASSOCIATES, INC

DIVISION 9 INTERSECTION  
ADA IMPROVEMENTS  
DAVIDSON, DAVIE, FORSYTH, ROWAN, AND  
STOKES COUNTIES  
STIP PROJECT R-5789F

MAP 2



**LEGEND**

- MISSING
- NOT COMPLIANT
- ▬ MUNICIPAL BOUNDARY
- ▬ NCHPO HISTORIC PROPERTY OR DISTRICT

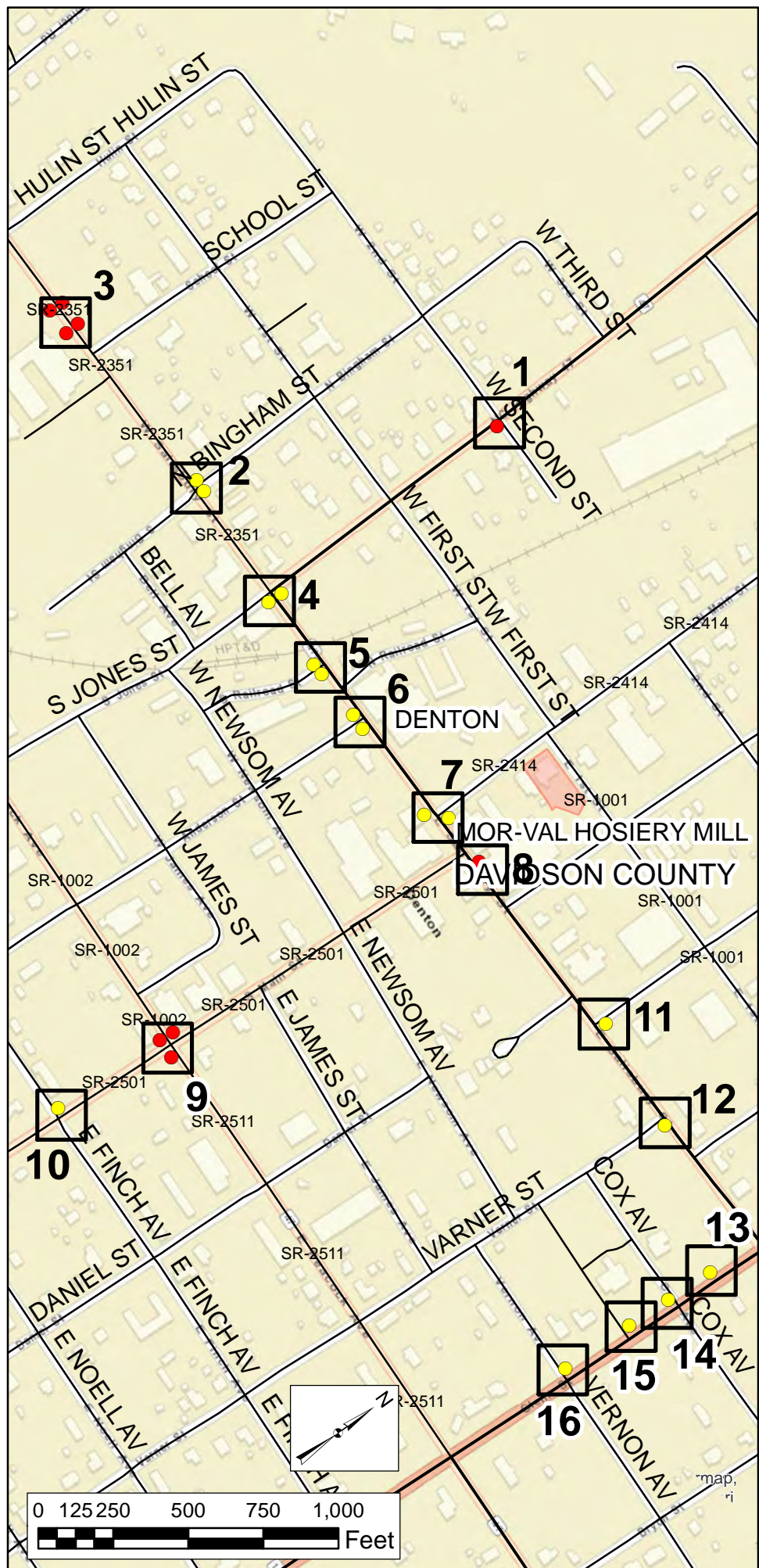
0 50 100 150 Ft

**NORTH CAROLINA DEPARTMENT OF TRANSPORTATION DIVISION OF HIGHWAYS**

RAMEY KEMP & ASSOCIATES, INC

DIVISION 9 INTERSECTION ADA IMPROVEMENTS  
DAVIDSON, DAVIE, FORSYTH, AND ROWAN COUNTIES  
STIP PROJECT R-5789F


MAP 3



**LEGEND**

- MISSING
- NOT COMPLIANT
- ▬ MUNICIPAL BOUNDARY
- ▬ NCHPO HISTORIC PROPERTY OR DISTRICT

0 50 100 150 Ft

 NORTH CAROLINA DEPARTMENT OF TRANSPORTATION

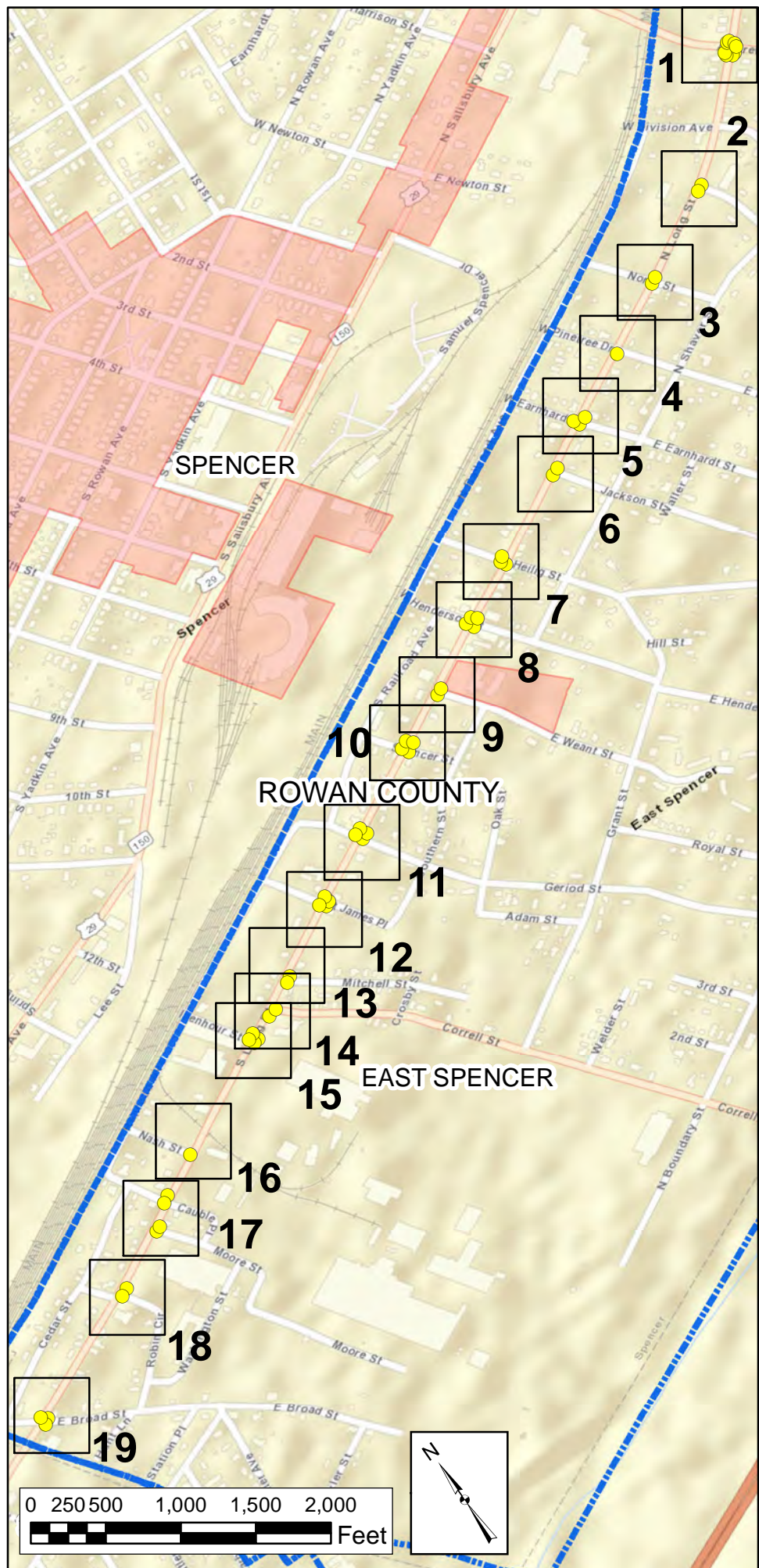
NORTH CAROLINA DEPARTMENT OF TRANSPORTATION  
DIVISION OF HIGHWAYS

RAMEY KEMP & ASSOCIATES, INC

DIVISION 9 INTERSECTION ADA IMPROVEMENTS  
DAVIDSON, DAVIE, FORSYTH, AND ROWAN COUNTIES  
STIP PROJECT R-5789F

MAP 3





**LEGEND**

**ADA RAMP IMPROVEMENT LOCATION**

- MISSING
- NOT COMPLIANT
- MUNICIPAL BOUNDARY
- NCHPO HISTORIC PROPERTY OR DISTRICT

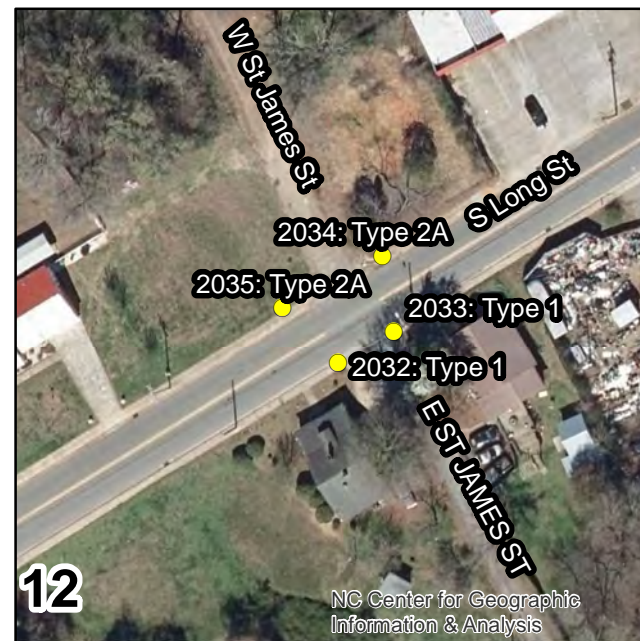
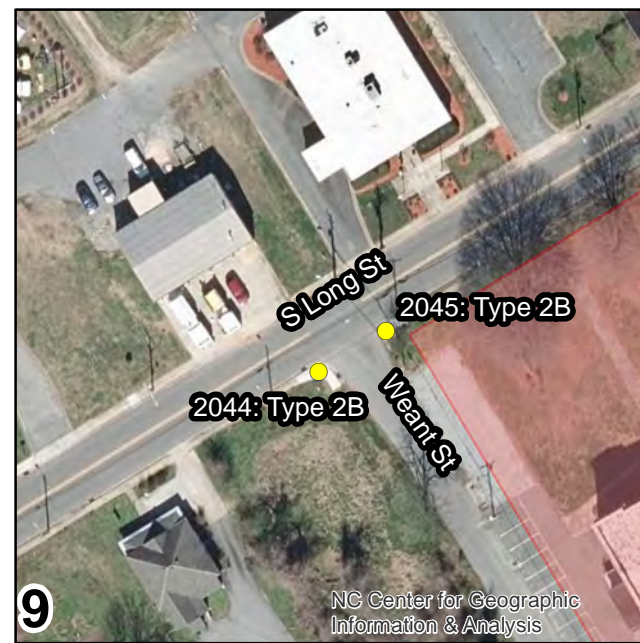
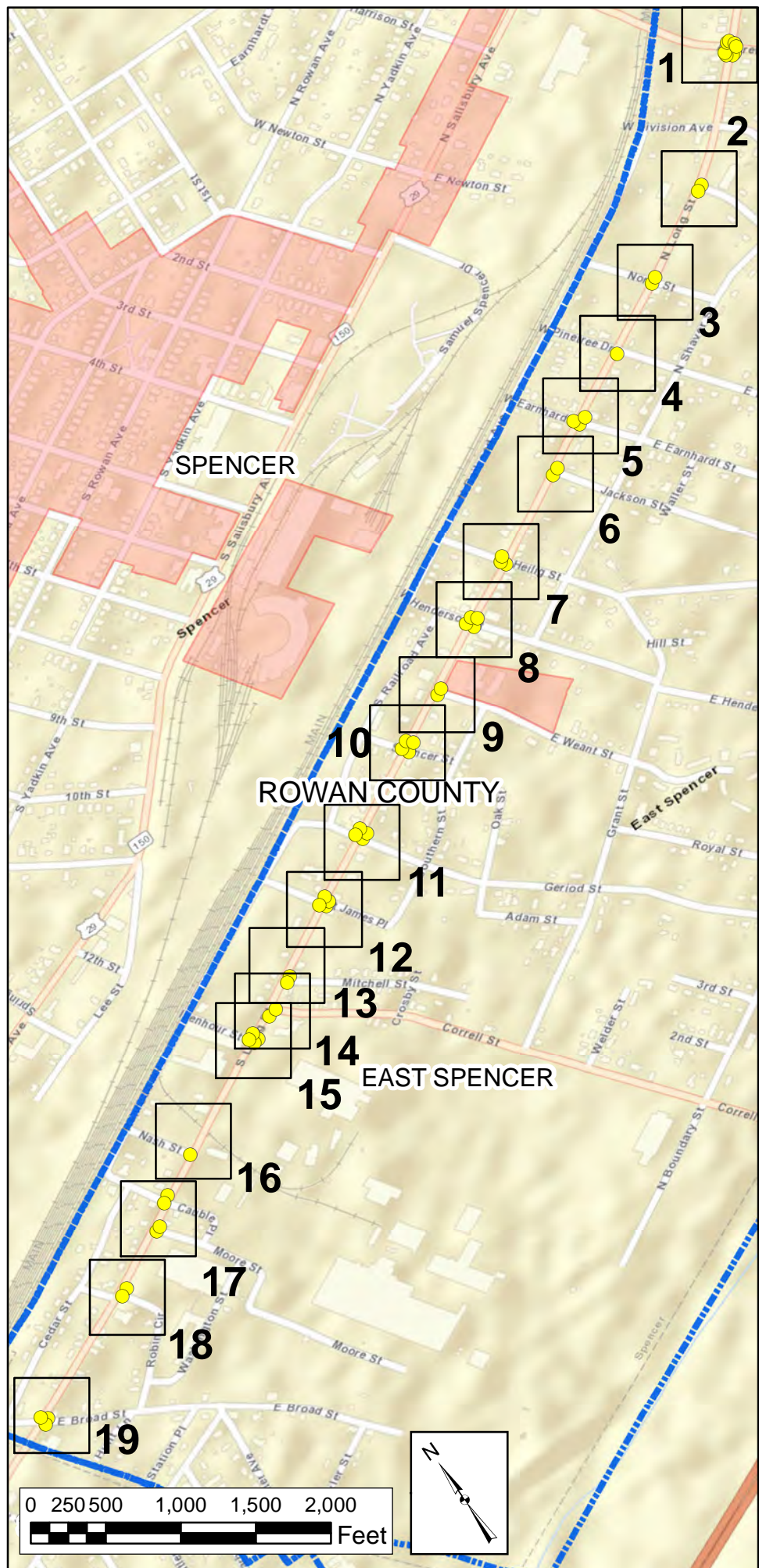
0 50 100 150 Ft

NORTH CAROLINA DEPARTMENT OF TRANSPORTATION  
DIVISION OF HIGHWAYS

RAMEY KEMP & ASSOCIATES, INC

DIVISION 9 INTERSECTION ADA IMPROVEMENTS  
DAVIDSON, DAVIE, FORSYTH, AND ROWAN COUNTIES  
STIP PROJECT R-5789F

MAP 4



**LEGEND**

**ADA RAMP IMPROVEMENT LOCATION**

- MISSING
- NOT COMPLIANT
- MUNICIPAL BOUNDARY
- NCHPO HISTORIC PROPERTY OR DISTRICT

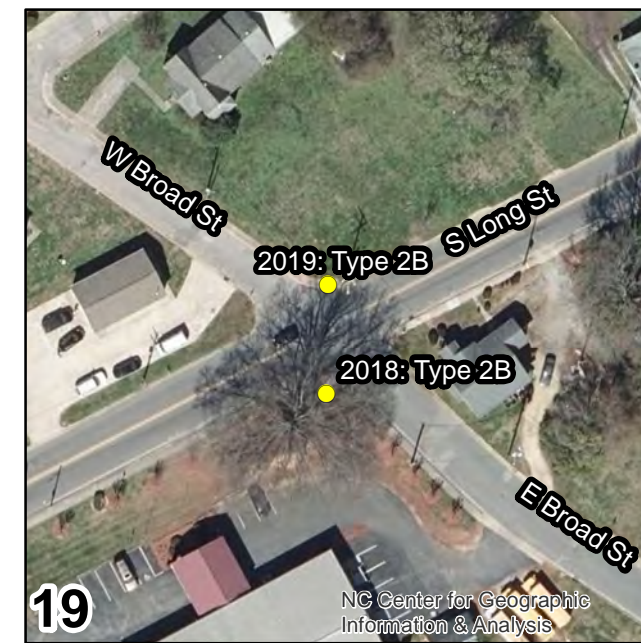
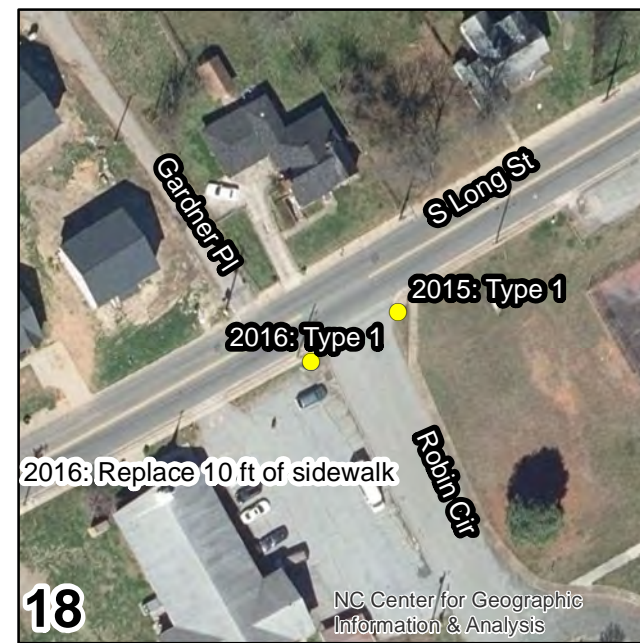
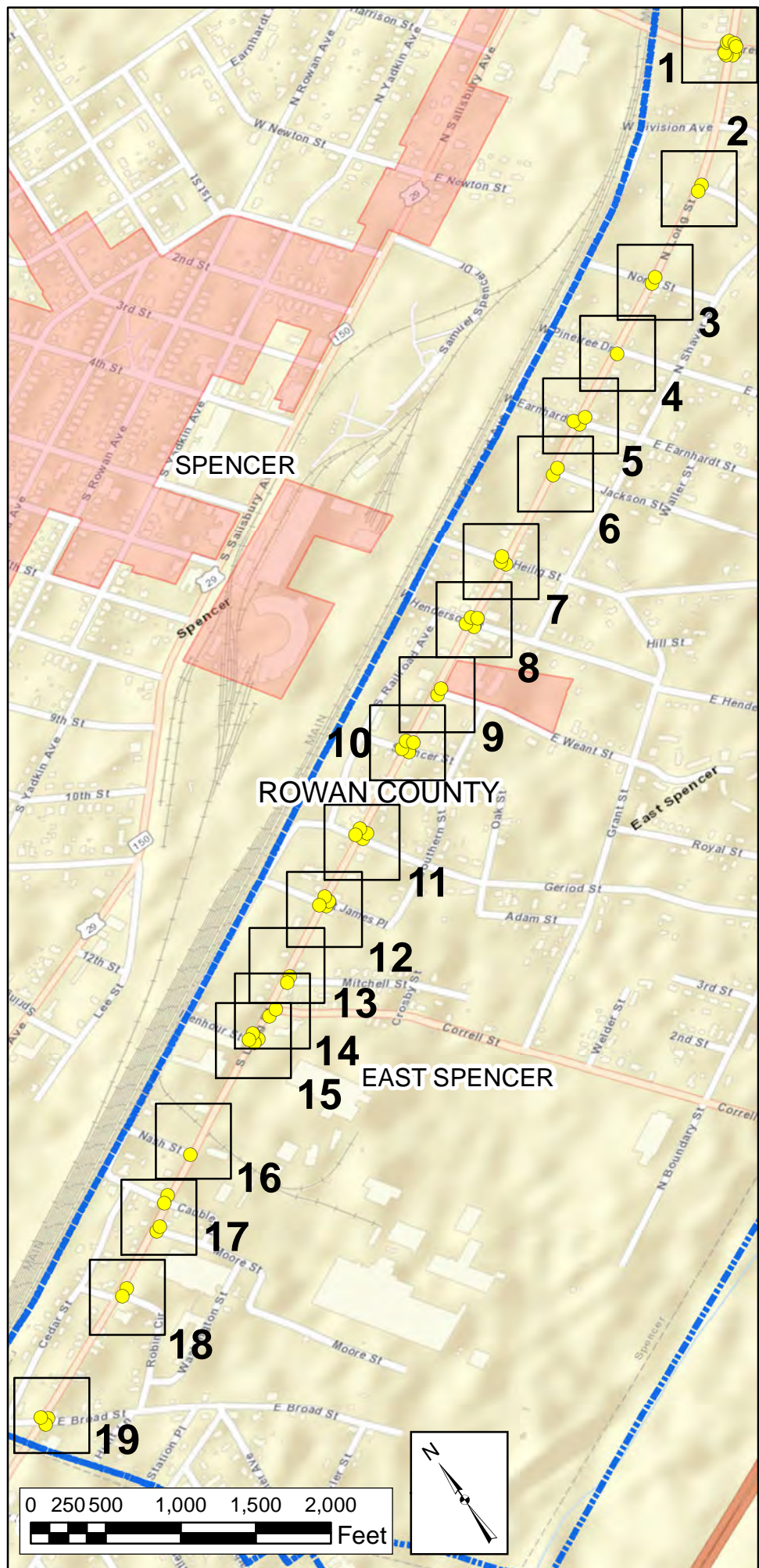
0 50 100 150 Ft

NORTH CAROLINA DEPARTMENT OF TRANSPORTATION  
DIVISION OF HIGHWAYS

RAMEY KEMP & ASSOCIATES, INC

DIVISION 9 INTERSECTION ADA IMPROVEMENTS  
DAVIDSON, DAVIE, FORSYTH, AND ROWAN COUNTIES  
STIP PROJECT R-5789F

MAP 4



**LEGEND**

- ADA RAMP IMPROVEMENT LOCATION
  - MISSING (Red dot)
  - NOT COMPLIANT (Yellow dot)
- MUNICIPAL BOUNDARY (Blue dashed line)
- NCHPO HISTORIC PROPERTY OR DISTRICT (Pink shaded area)

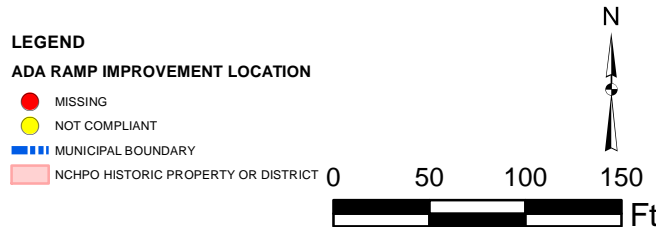
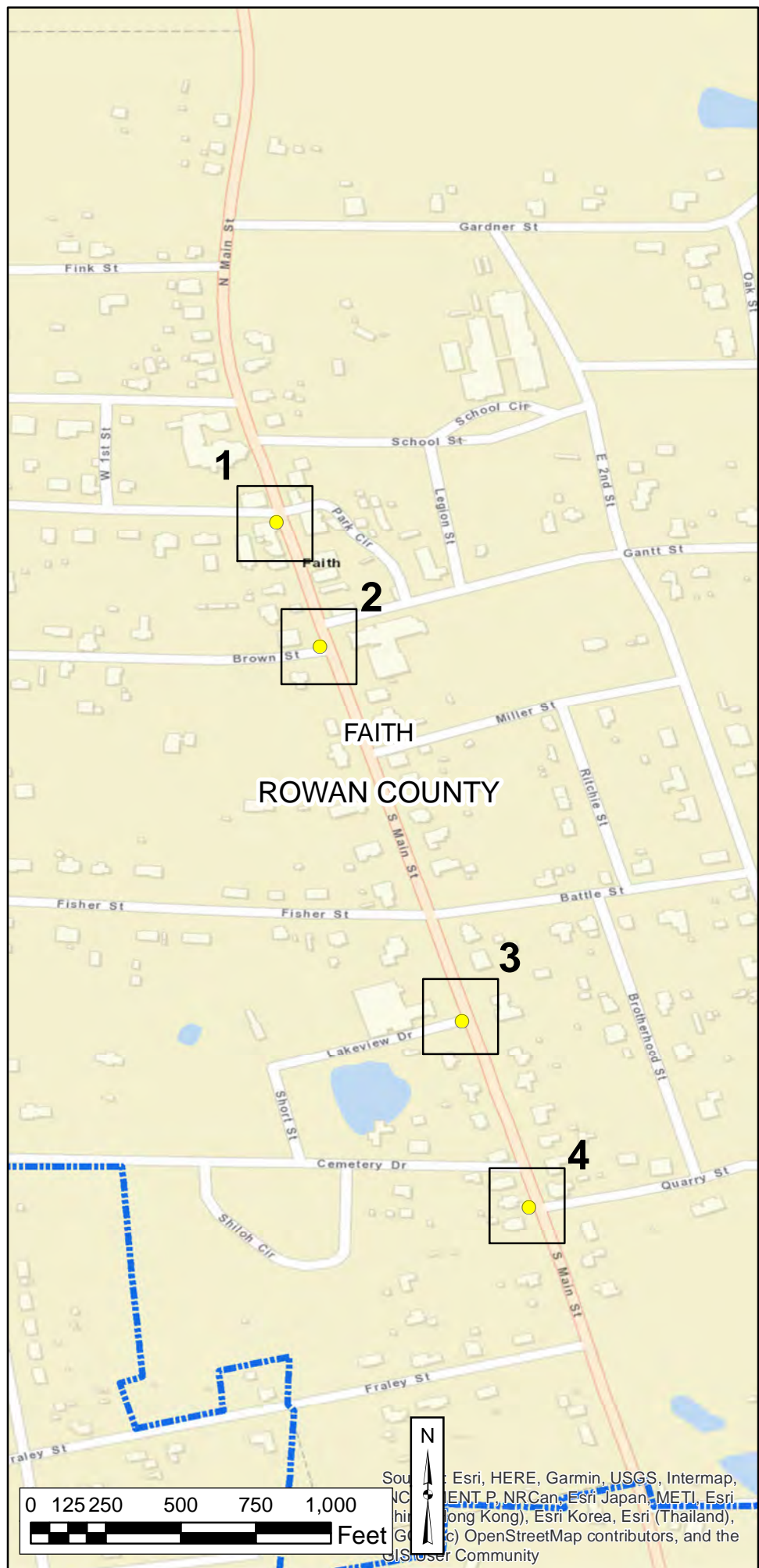
0 50 100 150 Ft


**NORTH CAROLINA DEPARTMENT OF TRANSPORTATION**  
**DIVISION OF HIGHWAYS**

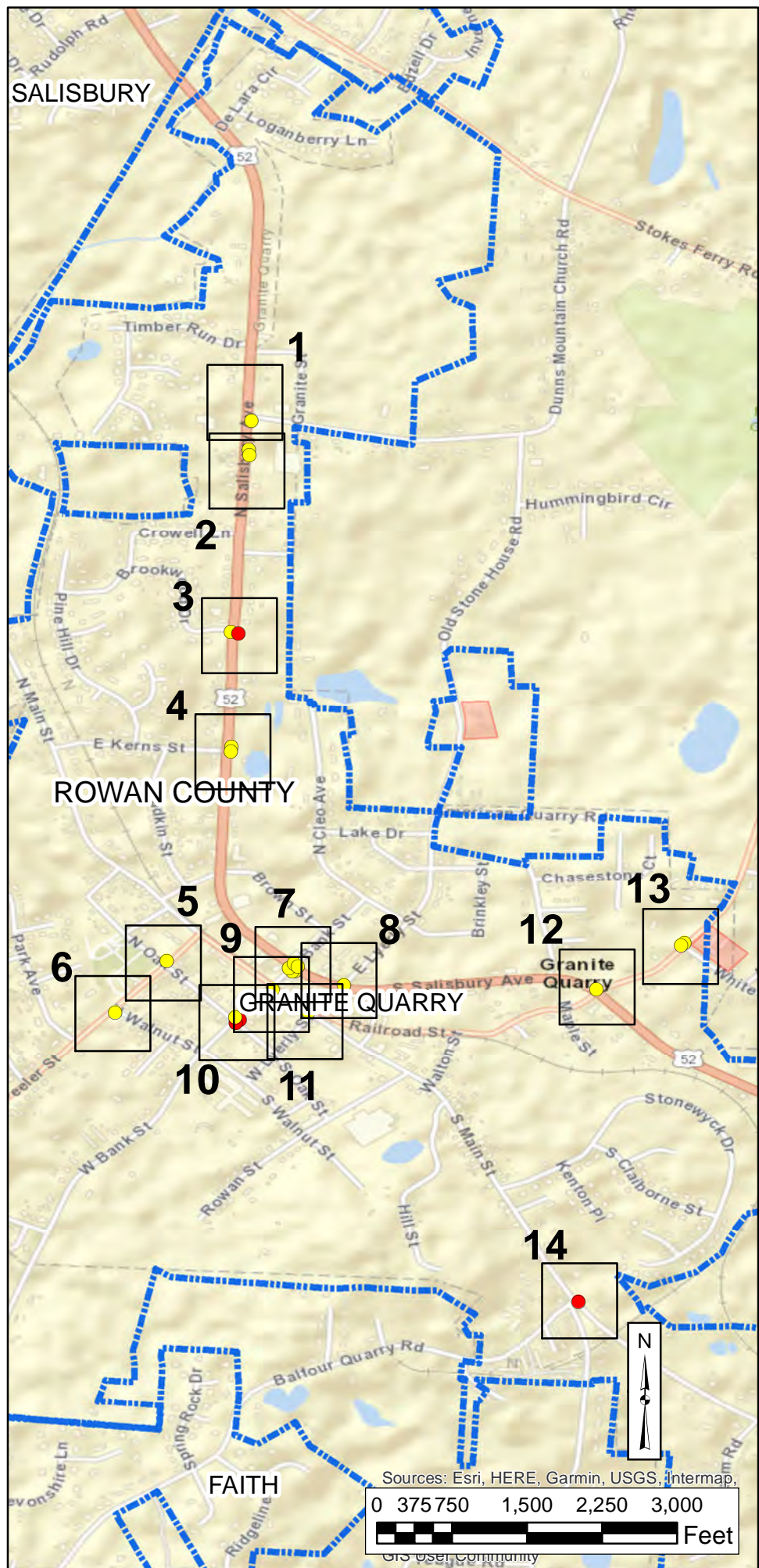
RAMEY KEMP & ASSOCIATES, INC

DIVISION 9 INTERSECTION ADA IMPROVEMENTS  
 DAVIDSON, DAVIE, FORSYTH, AND ROWAN COUNTIES  
 STIP PROJECT R-5789F

MAP 4



	NORTH CAROLINA DEPARTMENT OF TRANSPORTATION DIVISION OF HIGHWAYS
	RAMEY KEMP & ASSOCIATES, INC
DIVISION 9 INTERSECTION ADA IMPROVEMENTS DAVIDSON, DAVIE, FORSYTH, AND ROWAN COUNTIES STIP PROJECT R-5789F	
MAP 5	



**LEGEND**

**ADA RAMP IMPROVEMENT LOCATION**

- MISSING
- NOT COMPLIANT
- MUNICIPAL BOUNDARY
- NCHPO HISTORIC PROPERTY OR DISTRICT

0 50 100 150 Ft

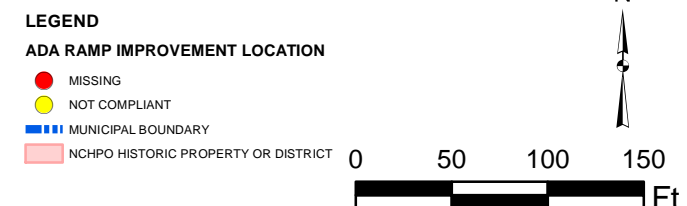
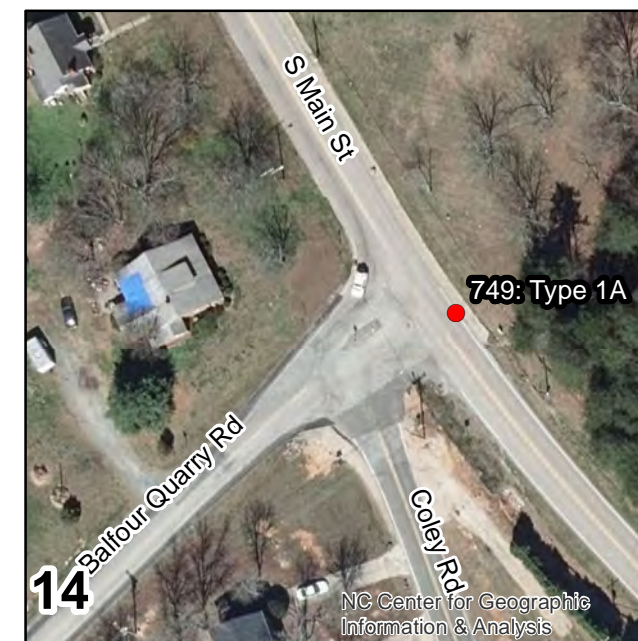
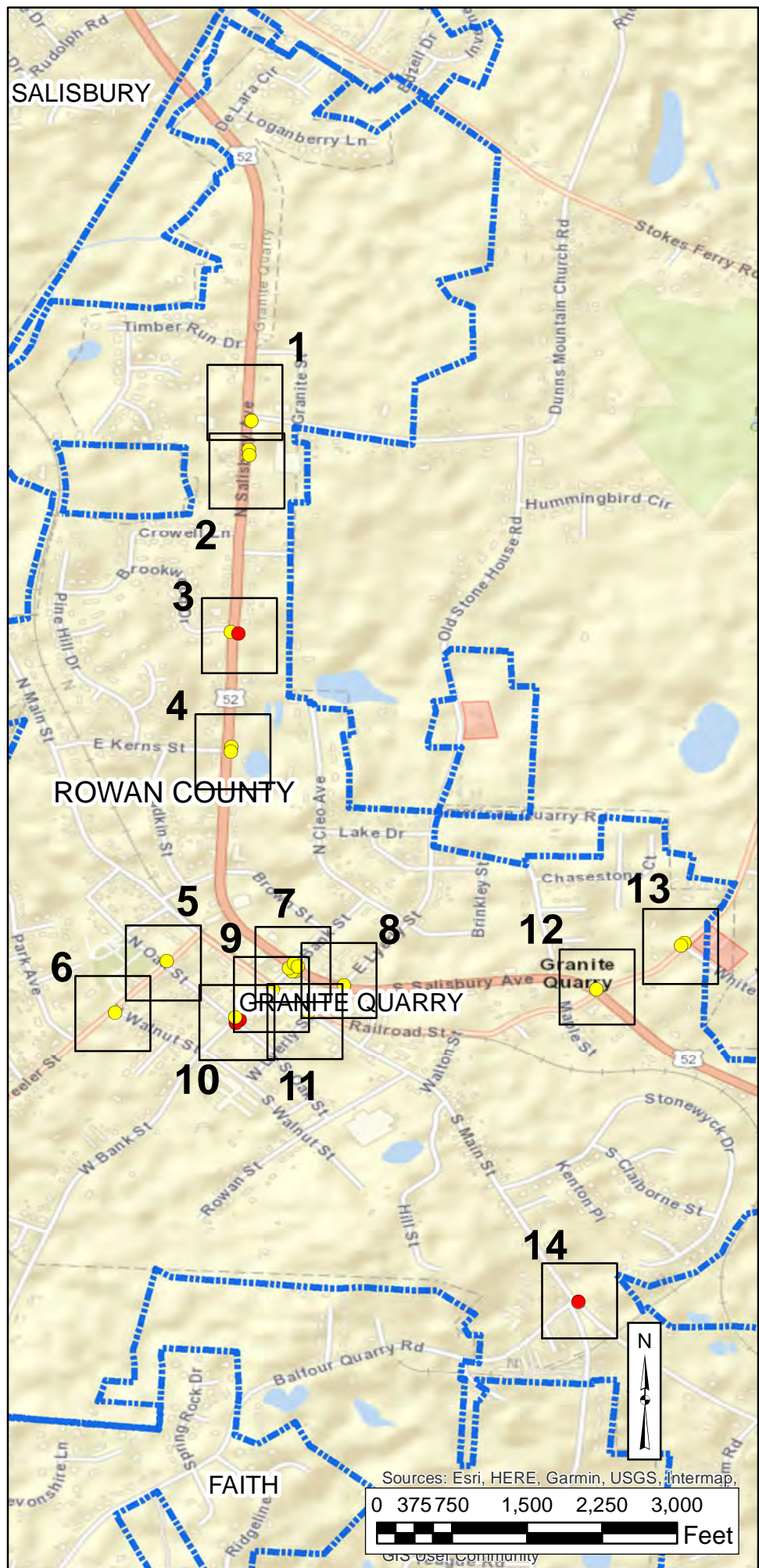

NORTH CAROLINA DEPARTMENT OF TRANSPORTATION

NORTH CAROLINA DEPARTMENT OF TRANSPORTATION  
DIVISION OF HIGHWAYS

RAMEY KEMP & ASSOCIATES, INC

DIVISION 9 INTERSECTION ADA IMPROVEMENTS  
DAVIDSON, DAVIE, FORSYTH, AND ROWAN COUNTIES  
STIP PROJECT R-5789F

MAP 6

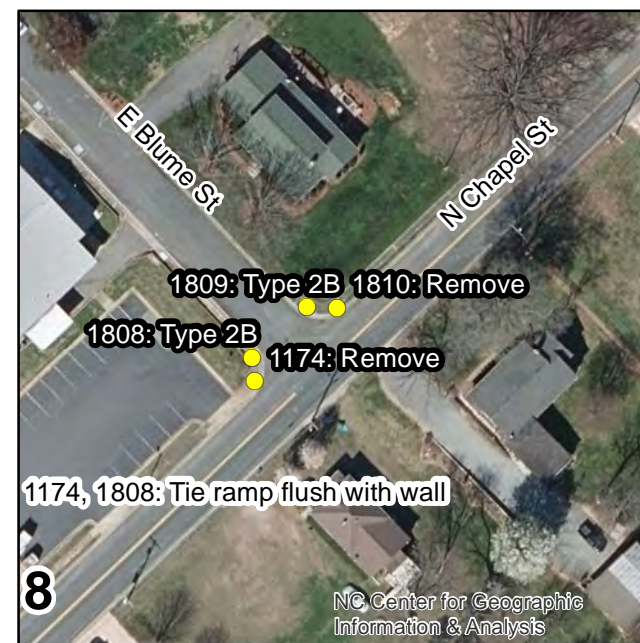
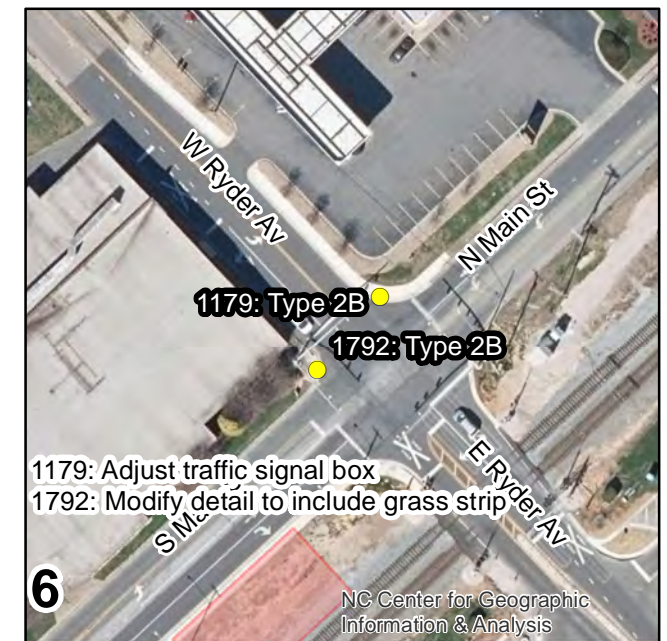
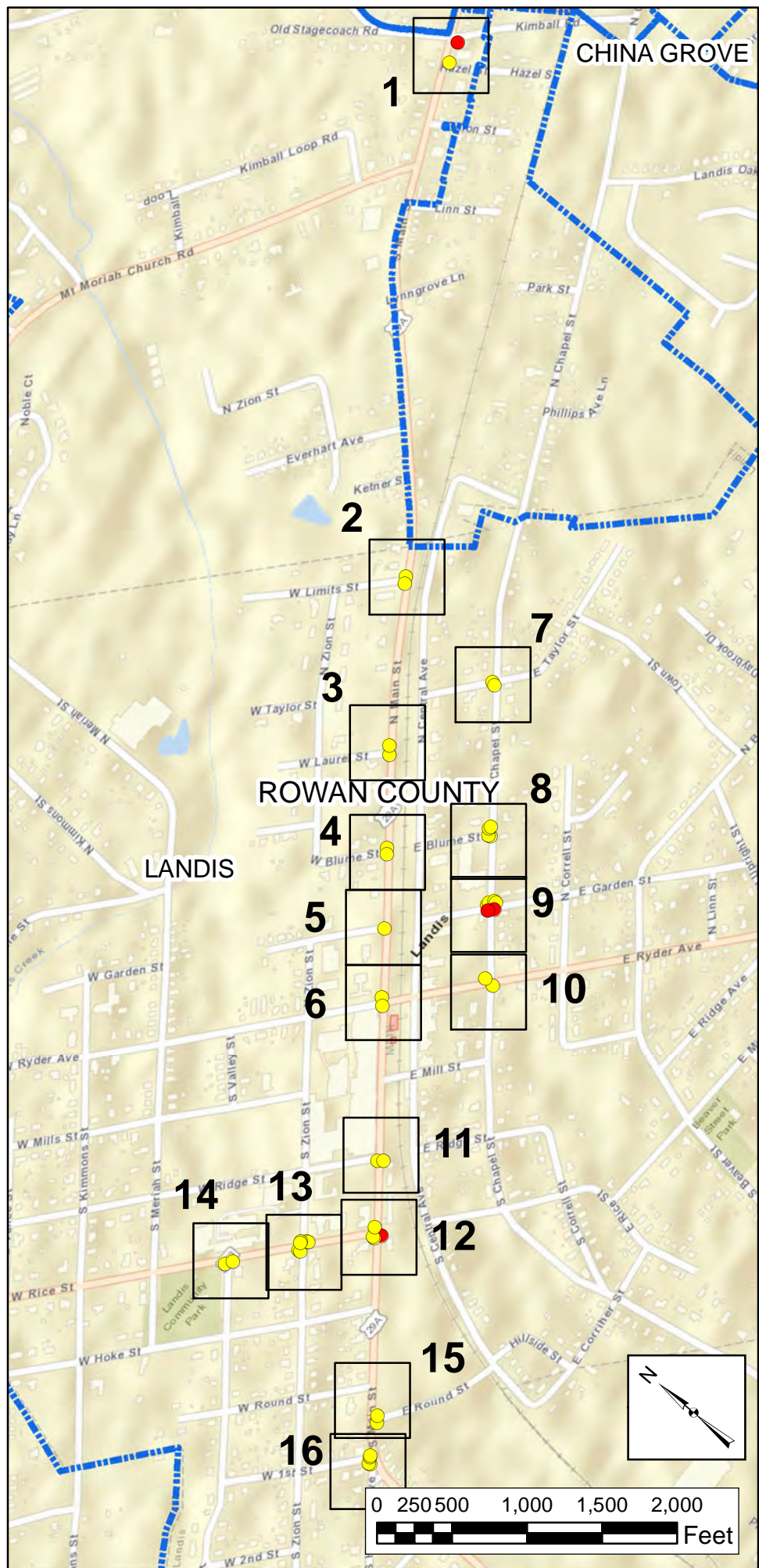



**NORTH CAROLINA DEPARTMENT OF TRANSPORTATION**  
**DIVISION OF HIGHWAYS**

RAMEY KEMP & ASSOCIATES, INC

**DIVISION 9 INTERSECTION ADA IMPROVEMENTS**  
 DAVIDSON, DAVIE, FORSYTH, AND ROWAN COUNTIES  
 STIP PROJECT R-5789F

MAP 6



**LEGEND**

**ADA RAMP IMPROVEMENT LOCATION**

- MISSING
- NOT COMPLIANT
- MUNICIPAL BOUNDARY
- NCHPO HISTORIC PROPERTY OR DISTRICT

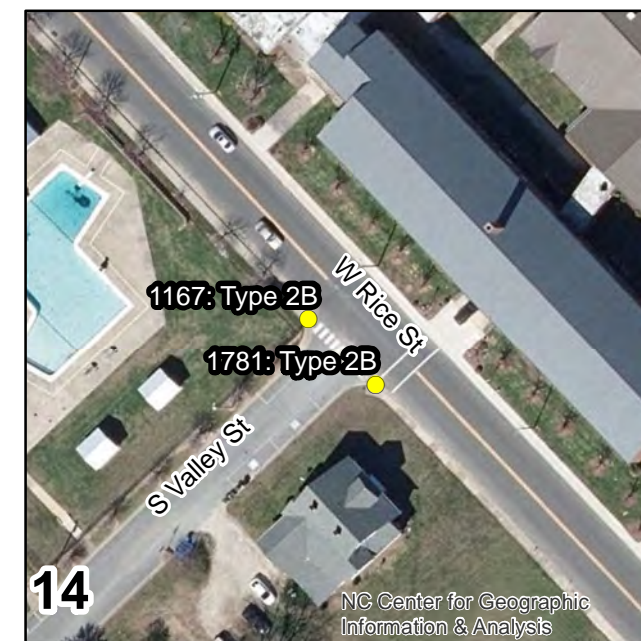
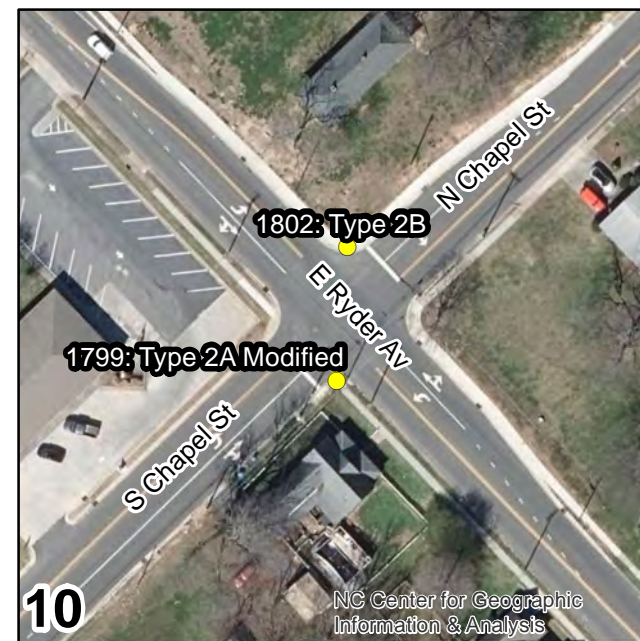
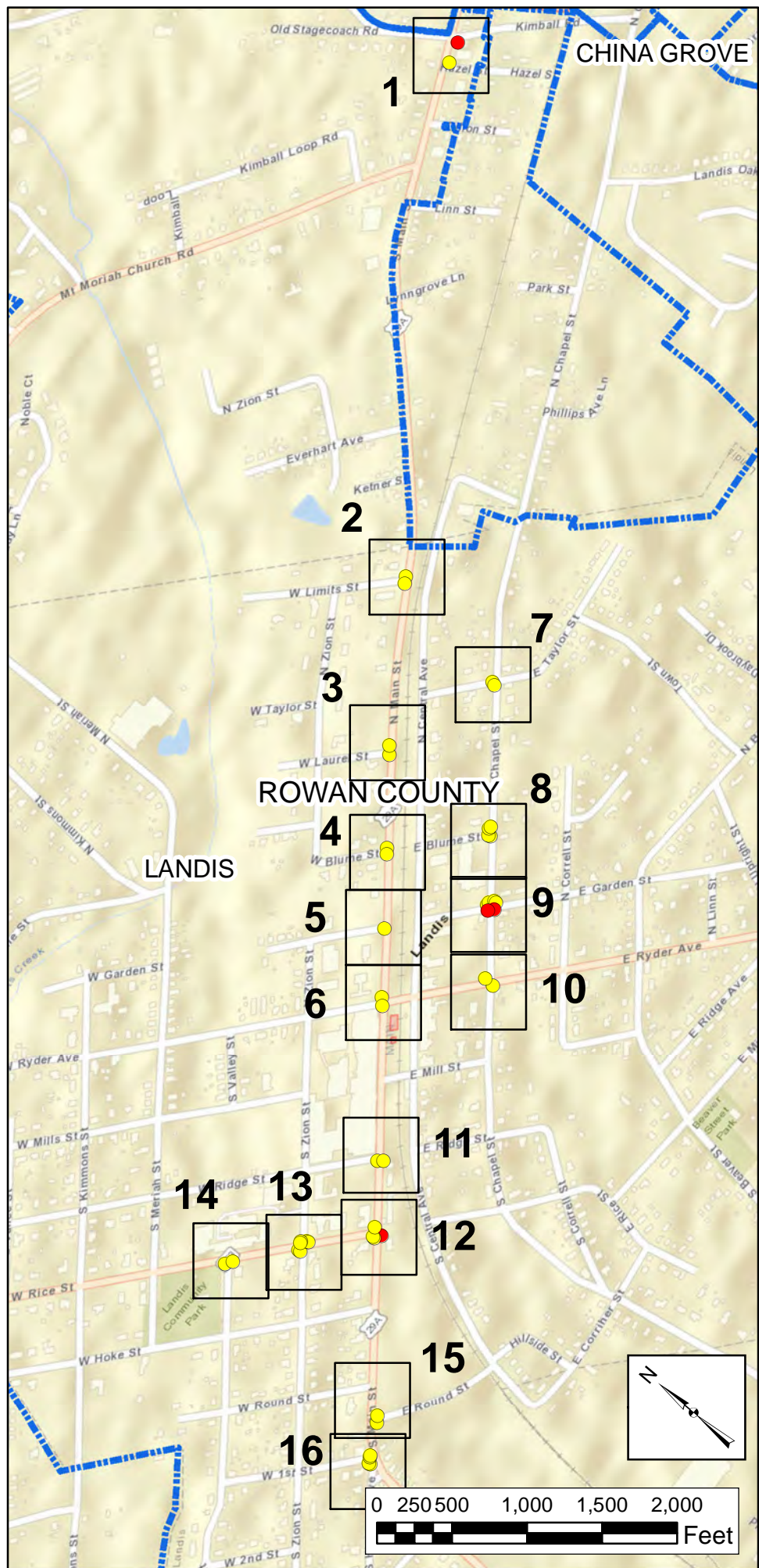
0 50 100 150 Ft

**NORTH CAROLINA DEPARTMENT OF TRANSPORTATION**  
DIVISION OF HIGHWAYS

RAMEY KEMP & ASSOCIATES, INC

DIVISION 9 INTERSECTION ADA IMPROVEMENTS  
DAVIDSON, DAVIE, FORSYTH, AND ROWAN COUNTIES  
STIP PROJECT R-5789F

MAP 7



**LEGEND**

**ADA RAMP IMPROVEMENT LOCATION**

- MISSING (Red dot)
- NOT COMPLIANT (Yellow dot)
- MUNICIPAL BOUNDARY (Blue dashed line)
- NCHPO HISTORIC PROPERTY OR DISTRICT (Pink shaded area)

0 50 100 150 Ft

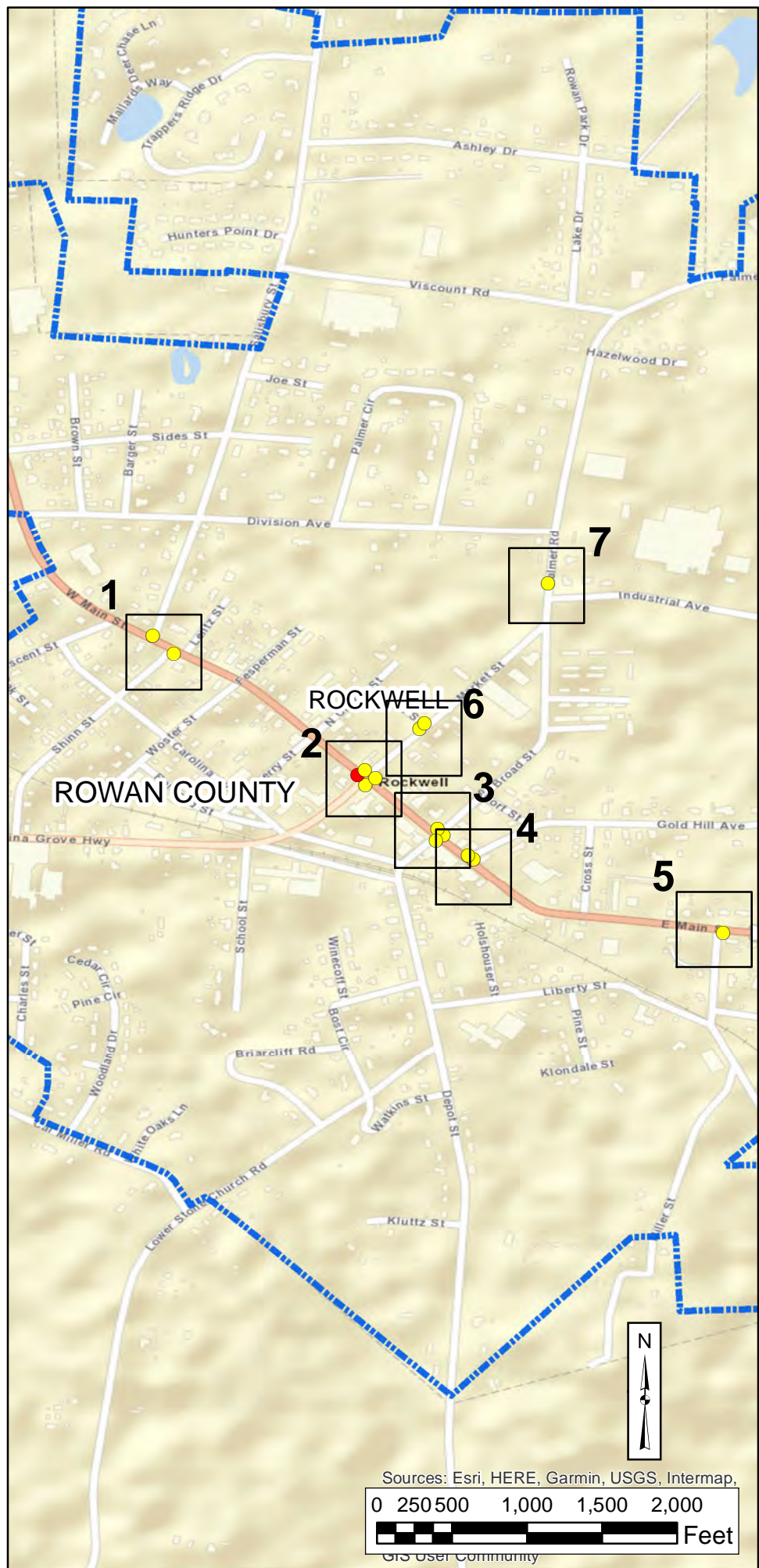
NORTH CAROLINA DEPARTMENT OF TRANSPORTATION  
DIVISION OF HIGHWAYS

RAMEY KEMP & ASSOCIATES, INC

DIVISION 9 INTERSECTION ADA IMPROVEMENTS  
DAVIDSON, DAVIE, FORSYTH, AND ROWAN COUNTIES  
STIP PROJECT R-5789F

MAP 7





**LEGEND**

**ADA RAMP IMPROVEMENT LOCATION**

- MISSING
- NOT COMPLIANT
- MUNICIPAL BOUNDARY
- NCHPO HISTORIC PROPERTY OR DISTRICT

0 50 100 150 Ft

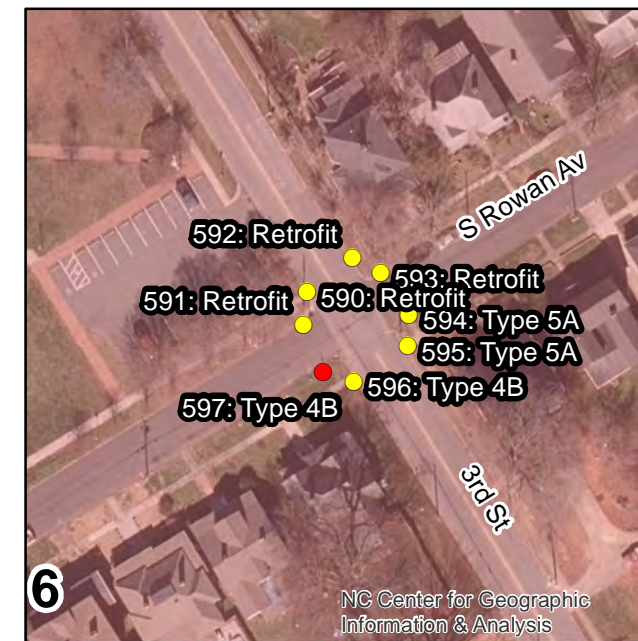
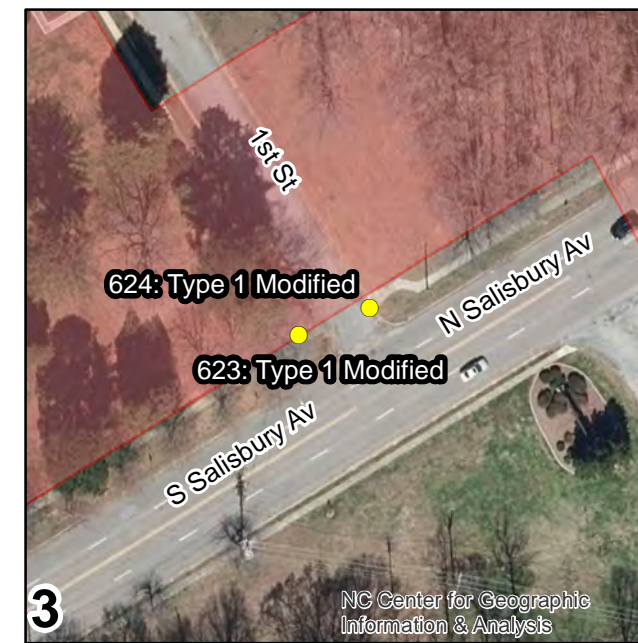
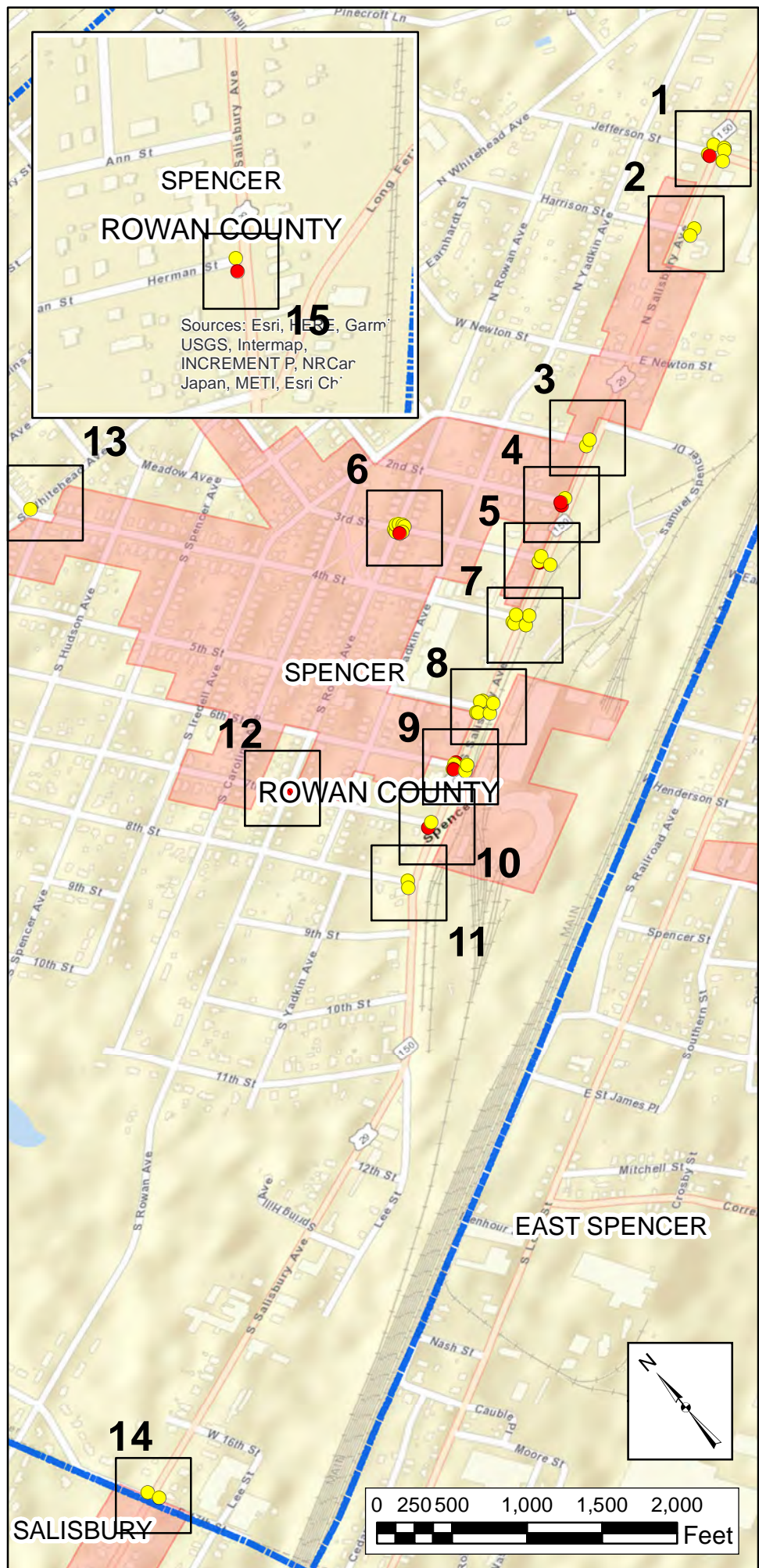
**NORTH CAROLINA DEPARTMENT OF TRANSPORTATION**  
**DIVISION OF HIGHWAYS**

RAMEY KEMP & ASSOCIATES, INC

**DIVISION 9 INTERSECTION ADA IMPROVEMENTS**  
 DAVIDSON, DAVIE, FORSYTH, AND ROWAN COUNTIES  
 STIP PROJECT R-5789F

MAP 8





**LEGEND**

**ADA RAMP IMPROVEMENT LOCATION**

- MISSING
- NOT COMPLIANT
- MUNICIPAL BOUNDARY
- NCHPO HISTORIC PROPERTY OR DISTRICT

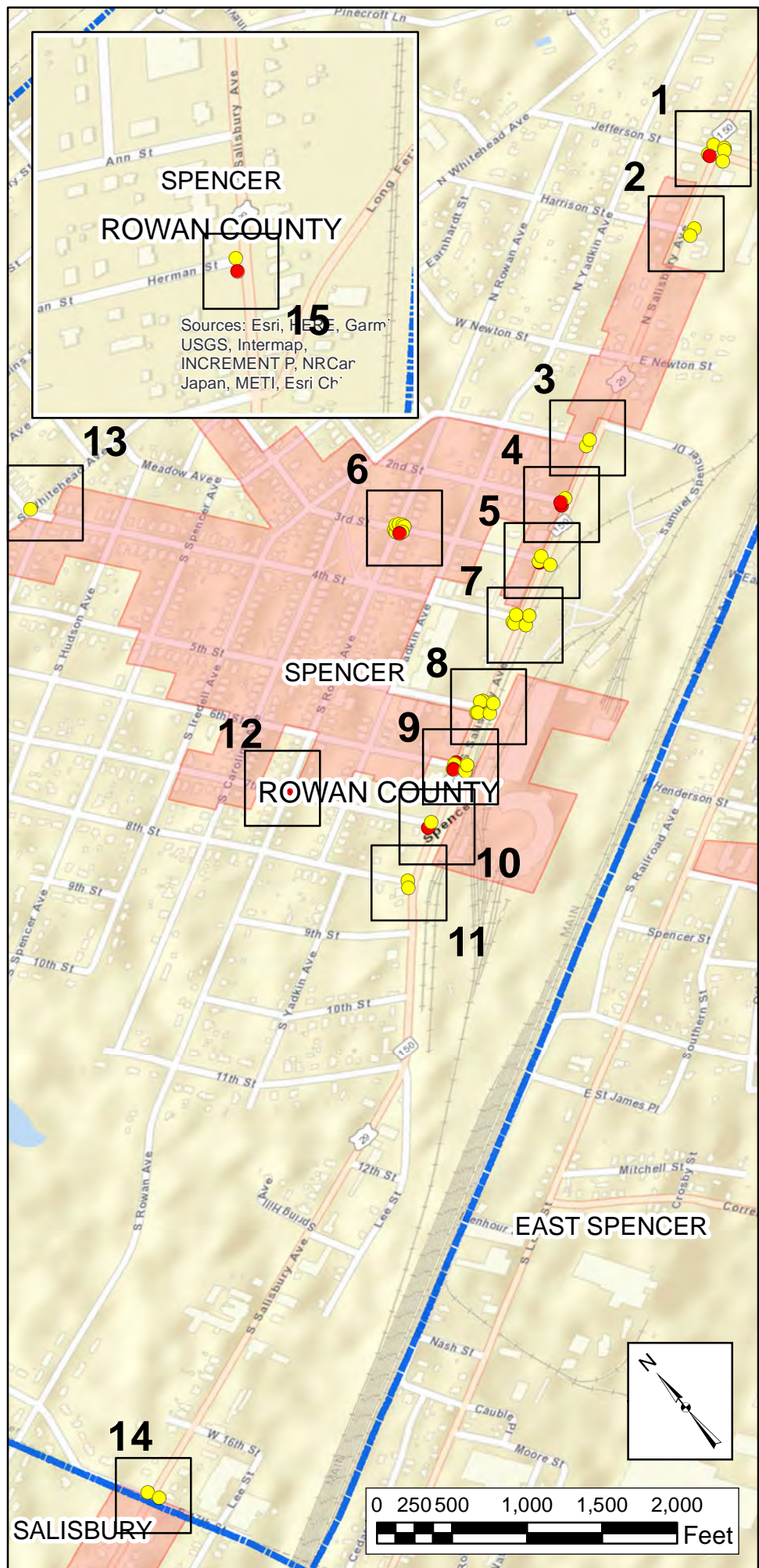
0 50 100 150 Ft

NORTH CAROLINA DEPARTMENT OF TRANSPORTATION  
DIVISION OF HIGHWAYS

RAMEY KEMP & ASSOCIATES, INC

DIVISION 9 INTERSECTION ADA IMPROVEMENTS  
DAVIDSON, DAVIE, FORSYTH, AND ROWAN COUNTIES  
STIP PROJECT R-5789F

MAP 10



**LEGEND**

**ADA RAMP IMPROVEMENT LOCATION**

- MISSING (Red dot)
- NOT COMPLIANT (Yellow dot)
- MUNICIPAL BOUNDARY (Blue dashed line)
- NCHPO HISTORIC PROPERTY OR DISTRICT (Pink shaded area)

0 50 100 150 Ft

NORTH CAROLINA DEPARTMENT OF TRANSPORTATION  
DIVISION OF HIGHWAYS

RAMEY KEMP & ASSOCIATES, INC

DIVISION 9 INTERSECTION  
ADA IMPROVEMENTS  
DAVIDSON, DAVIE, FORSYTH,  
AND ROWAN COUNTIES  
STIP PROJECT R-5789F

MAP 10